



Plastic Hardware Specialists
Cabinet Master[®] Plastic Hardware

Bainbridge Manufacturing, Inc.

Since 1960

2025

65th Anniversary!

www.bainbridgemfg.com

237 W. 3rd Street • PO Box 487 • Waterville, WA 98858
(509) 745-9555 • 1-800-255-4702 • Fax (509) 745-9666



1. Table of Contents
2. Terms and Conditions
- 3. New Products**
4. Drawer Slide Sockets
5. False Front Clips
6. Grommets
7. Corner Braces and Brackets
8. Drawer Slide Spacers
9. Shelf Supports
10. Drawer Bumpers
11. Ventilation Grills
12. Vertical Divider Clips
13. Shelf Hold Down Clips
14. Hinge, Catch and Lock Spacers
15. Glass and Door Panel Clips
16. Mirror and Screen Clips
17. Door Clips
18. Drawer Stops and Latches
19. Corner Protectors
20. Slide Glides
21. Caps and Covers
22. Finishing Plugs
23. Drawer Pulls
24. Glides and Guides
25. Miscellaneous items



Bainbridge Manufacturing, Inc.

Plastic Hardware Specialists | *Cabinet Master® Plastic Hardware*

PO Box 487, 237 W. 3rd Street Waterville, WA 98858

1-509-745-9555 | info@bainbridgemfg.com

www.bainbridgemfg.com

Terms & Conditions

Terms of Payment

Hardware Products -1% -10 days from date of invoice/Net 30 days, unless otherwise negotiated with our US office.

Rush Orders-shipped same day order is received. There is a \$25.00 surcharge for this service.

Finance Charge - 1.5%/month on delinquent charges.

International Shipments - must be prepaid unless otherwise approved by Bainbridge Manufacturing, Inc. (BMI)'s U.S. Office.

Credit

Credit approval by our credit department is required for open account terms. Allow 10 to 15 days. Pending approval, domestic orders can be shipped by C.O.D. or can be prepaid by credit card. We accept Master Card, Visa, Discover, and American Express.

C.O.D. Shipments

COD shipments are available through UPS only. COD charges are billed collect. Orders shipped to customers who are not on an open account basis can be C.O.D. or prepayment can be made by credit card. We accept Master Card, Visa, Discover, and American Express.

Special Color and Set Up Charges

Color matching charge: \$250.00 for new colors. Special color run charge for current colors is \$150.00 per order. Set up charges for discontinued parts is \$250.00 per order. A plus or minus amount of 10% per run per order will need to be purchased.

Customs, Duties and Import/Export Documentation

Unless otherwise agreed to by BMI's U.S. Office, the buyer shall bear all risk and expense of obtaining any documents by the country of delivery and/or origin for the purpose of exportation and/or importation (and where necessary for passage in transit through another country) including the cost of certificates of origin, export license and consular fees. The buyer shall also bear all costs and expense of any custom duties and taxes that may be levied by reason of export or import or in transit.

Insurance

Unless otherwise agreed to by BMI's U.S. Office, the buyer shall be responsible for procuring, at its own cost, insurance coverage against the risk of carriage of the goods and for coverage of any special risks against which the buyer requires coverage.

Call For Free Samples!
www.bainbridgemfg.com

1-800-255-4702

Rev. 07.10.24 2.1



Bainbridge Manufacturing, Inc.

Plastic Hardware Specialists | *Cabinet Master® Plastic Hardware*

PO Box 487, 237 W. 3rd Street Waterville, WA 98858

1-509-745-9555 | info@bainbridgemfg.com

www.bainbridgemfg.com

Terms & Conditions

Return Merchandise

No merchandise may be returned without prior authorization. Return goods are subject to restocking charges. Special order (non-catalog) items are non-returnable under any circumstances. We do not accept returns of merchandise purchased prior to one(1) year from date of shipment. Please call 509-745-9555 for returns and RGA information.

Delivery Shortages

All claims for shortage must be filed within 30 days after invoice date for the merchandise.

Prices

Prices are subject to change without prior notice. All special quotation prices are good for 30 days unless otherwise noted. All invoicing and quotations for costs, pricing and shipping charges relating to Bainbridge Manufacturing, Inc. are always U.S. currency.

Office Hours

7:00 a.m. to 4:00 p.m. PST Monday - Friday

CLOSED SATURDAYS AND SUNDAYS

Exceptions

Exceptions to the General Policies outlines above may be negotiated on a case-by-case basis.

LIMITED PRODUCT WARRANTY

All parts sold by BMI are warranted to be free of defects in material or workmanship under normal use and service for a period of (1) year from date of shipment. If the product should fail under normal use and service because of such defect, we will replace it with a new one at no charge, provided the original is returned to our factory for inspection, transportation prepaid within (30) days after the defect is discovered. Our liability under this warranty is expressly limited to replacement of the product without charge, and in no event shall we be liable in any way for consequential, special or incidental damages.

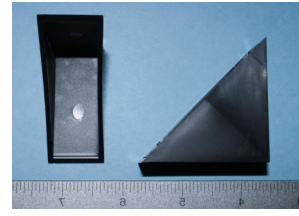
**WE MAKE NO OTHER WARRANTIES, EXPRESSED
OR IMPLIED, INCLUDING IMPLIED WARRANTIES OR
MERCHANT-ABILITY AND FITNESS FOR A
PARTICULAR PURPOSE.**



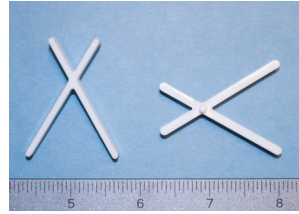
#18153 Vanity Shelf Support
5mm round peg
300 long peg
Multiple colors



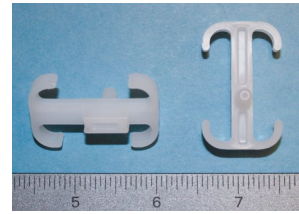
#5600 Corner Protector
3/4" thick board



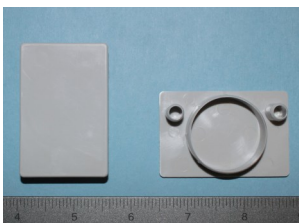
#3413 Shelf Hold Down
3mm peg
STUB ENDS



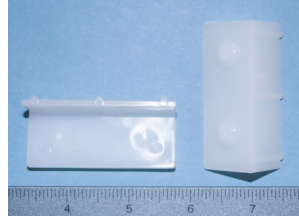
#3412 Shelf Hold Down
1" & 3/4" shelf
5mm peg



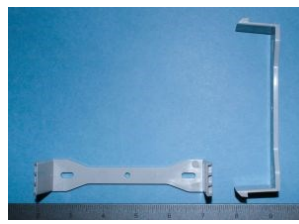
#19221 Hinge Cover
Covers 35mm hinge holes
Multiple colors



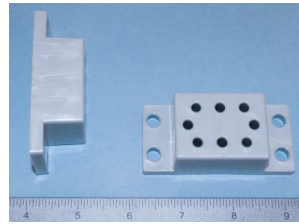
#5411 Slide Glide
Staple on single sided
2 glide bumps
2-3/8" long



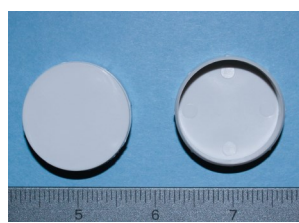
#4322 False Front Clip
4-3/4" Opening
7/8" Face Frame
Screw in place



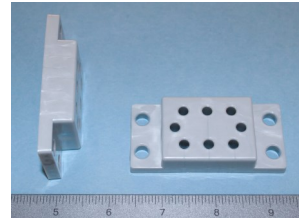
#36951 Under Mount / Hinge
8 hole Spacer
1" Offset
Multiple colors



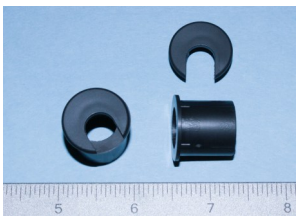
#19321 Hinge Cover
Fits 35mm hinge holes
Multiple colors



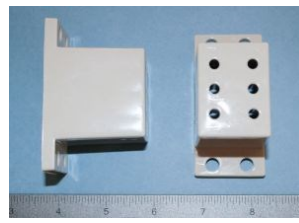
#36521 Under Mount / Hinge
8 hole Spacer
5/8" Offset
Multiple colors



#1048 Cord Grommet
Fits 3/4" drilled hole

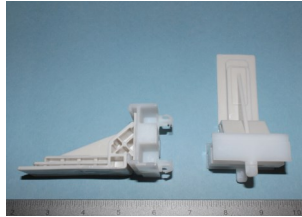


#3698 Under Mount
6 hole Spacer
50mm Offset
Multiple colors

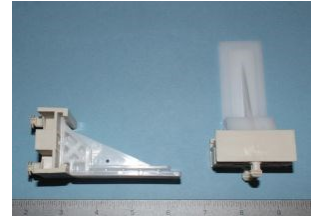




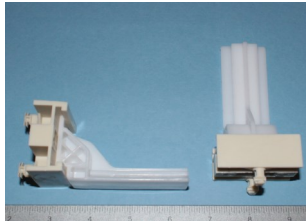
#6211 Undermount
8mm standard pegs
1/2" R—L movement



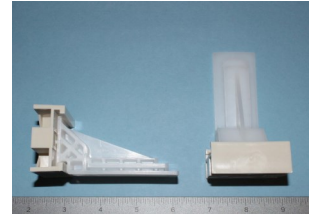
#6206 Undermount
8mm ultra grip pegs
1/2" R—L movement



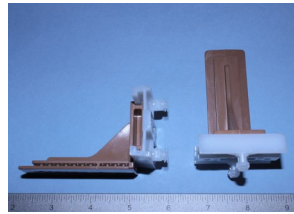
#6204 Under Mount
3/4" R—L adjustment
Stop 1-7/8 from back
3-3/4 long
8mm standard pegs



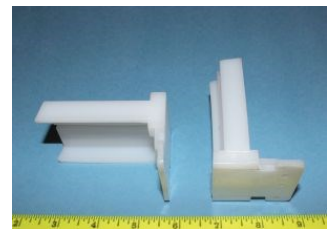
#6208 Undermount
No pegs screw on
1/2" R—L movement



#6019 Undermount
8mm standard pegs
1/2" R—L movement



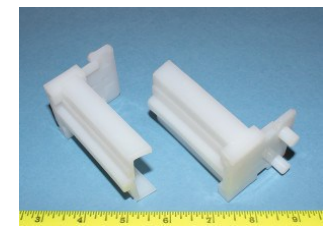
#6743 Full Extension
No pegs.
Screw on
2-9/16" deep



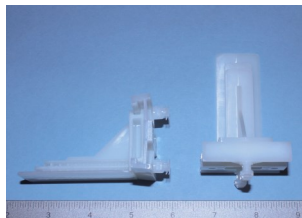
#683 Under Mount
Adjustable socket
3 inches long
8mm locking pegs



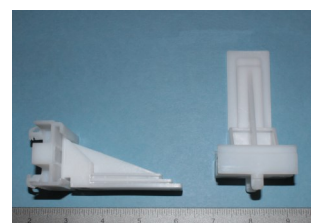
#674 Full Extension
8mm pegs.
Right and Left
2-9/16" deep
Peg length 3/8"



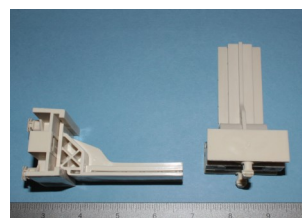
#6018 Undermount
8mm standard pegs
1/2" R—L movement



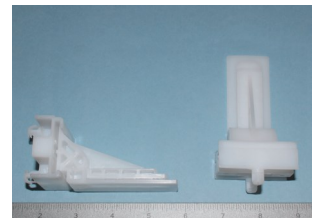
#6791 Undermount
Adjustable socket
3 inches long
8mm locking pegs
Tight Friction R—L



#6203 Under Mount
3/4" R—L adjustment
Stop 1-1/4 from back
3-3/4 long
8mm standard pegs

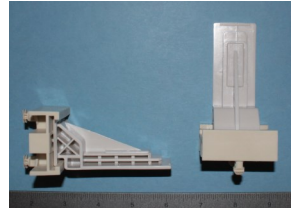


#6209 Under Mount
3/4" R—L adjustment
3-3/4 long
8mm pegs

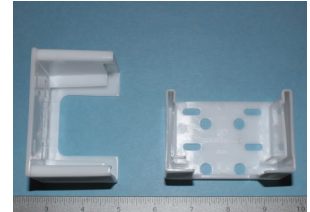




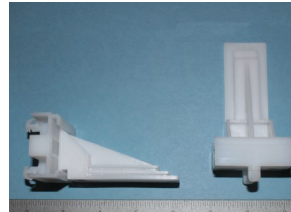
#6016 Undermount
8mm ULTRA GRIP pegs.
3-3/4" long
Center pegs



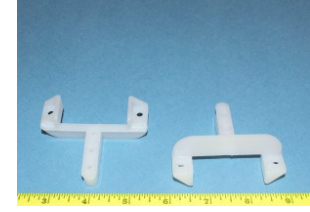
#6202 Under Mount
No pegs
Non handed
Screw in place



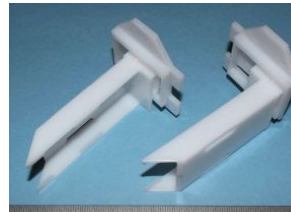
#679 Undermount
Adjustable socket
3 inches long
8mm locking pegs



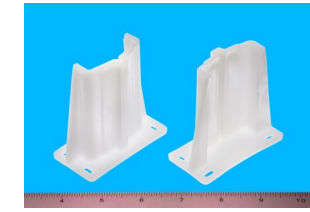
#601 Full Extension
Face Frame attachment
Use with #627 or #615



#6101 Full Extension
Adjustable
Staple or screw in place
1/2" R to L movement
4" long



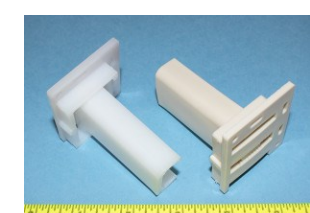
#615 Full Extension
2-9/16" deep



#6207 Undermount
8mm standard pegs
1/2" R—L movement



#622 Epoxy
Adjustable
1" x 7/16"
2-3/8" deep
Right and Left



#627 Full Extension
1-9/16" deep



#648SC Euro
Self Closing
2 -1/8" deep
Right and Left



#644 Full Extension
1-9/16" deep

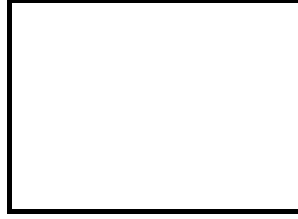
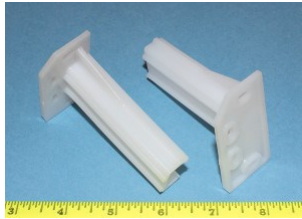


#662SC Euro
Self Closing
3" deep
Right and Left

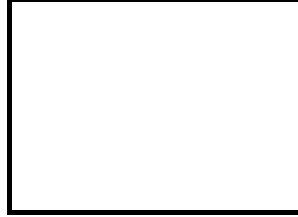
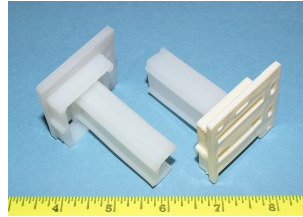




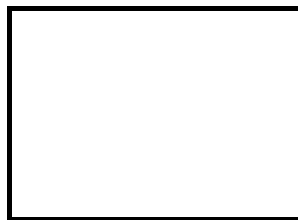
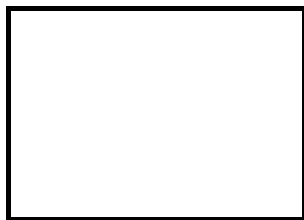
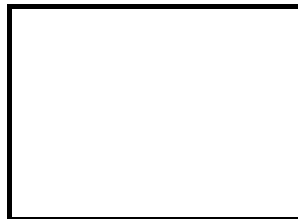
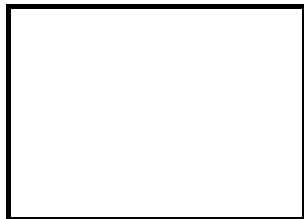
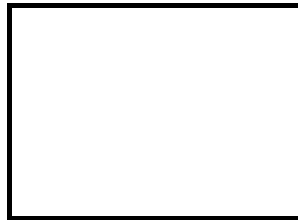
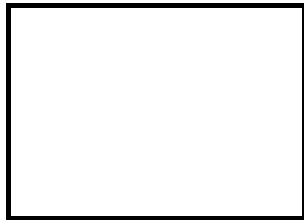
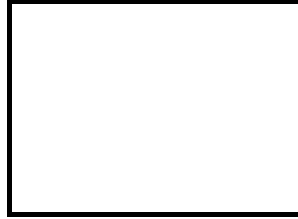
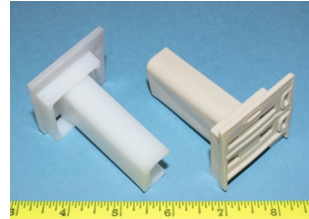
#660SC Euro
Self Closing
3" Long
Right and Left



#659 Euro
Adjustable
2-¹/₈" deep
Right and Left



#622SC Epoxy
Adjustable
Self Closing
2-³/₈" deep
Right and Left



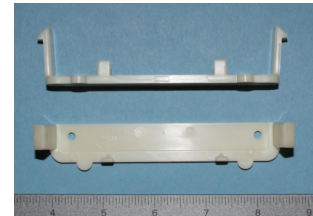


False Front Attachments

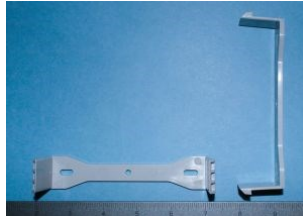
#4319 False Front Clip
5-1/4" opening
2.5mm bumper
3/4 Face Frame
Screw in place



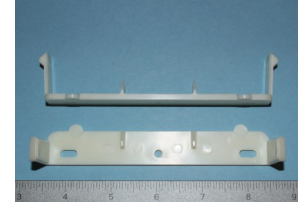
#4316 False Front Clip
4-1/2" opening
3/4" face frame
3mm bumper



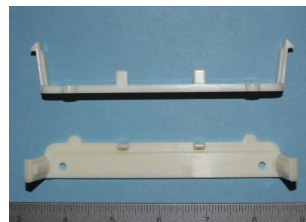
#4322 False Front Clip
4-3/4" Opening
7/8" Face Frame
Screw in place



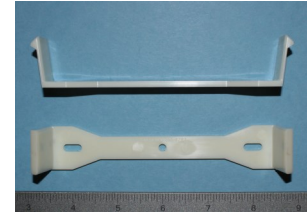
#4320 False Front Clip
5" opening
2mm bumper
3/4 Face Frame
Screw in place



#4317 False Front Clip
5" opening
1/8" bumper
3/4 Face Frame
Screw in place



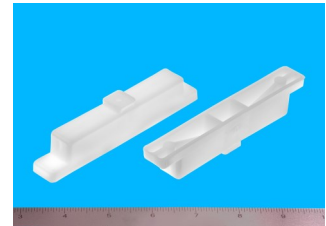
#4315 False Front Clip
5" opening
3/4" face frame
no bumper



#4300 False Front Block
3/4" thick
4-1/2" high opening



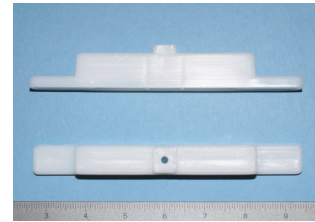
#4301 False Front Block
13/16" thick
4-1/2" high opening



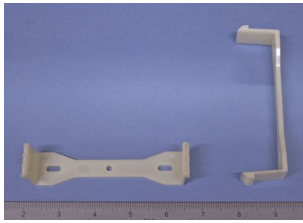
#4307 False Front Block
5/8" thick
5" high opening



#4313 False Front Block
3/4" Thick
4-1/2" high opening



#3421 False Front Clip
4-1/4" Opening
7/8" Face Frame
Screw in place



#4314 False Front Clip
4-1/2" opening
3/4" face frame
no bumper





Bainbridge Manufacturing, Inc.

Plastic Hardware Specialists | Cabinet Master® Plastic Hardware

PO Box 487, 237 W. 3rd Street Waterville, WA 98858

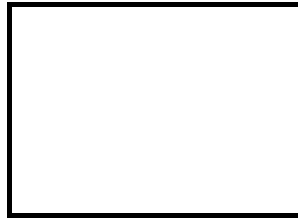
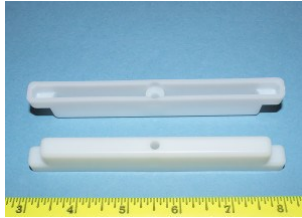
1-509-745-9555 | info@bainbridgemfg.com

www.bainbridgemfg.com

False Front Attachments

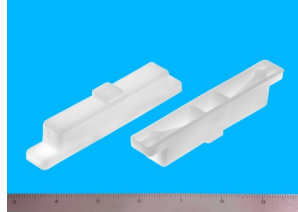
#4306 False Front Block

1/2" thick face frame
4-1/2" high opening



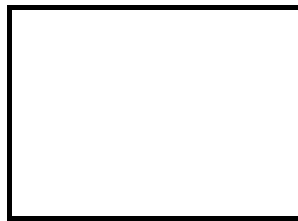
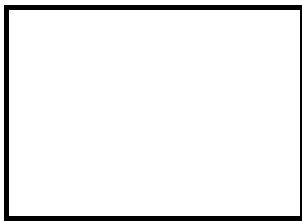
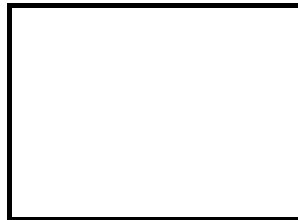
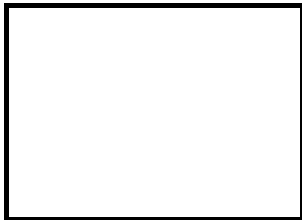
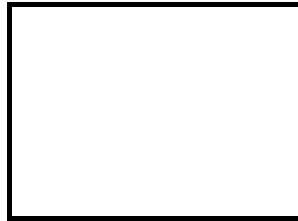
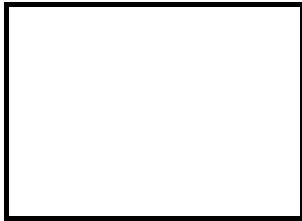
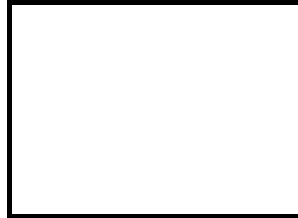
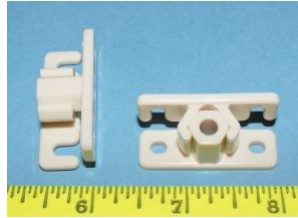
#4302 False Front Block

3/4" thick
4" high opening



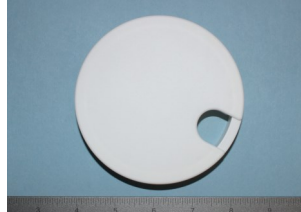
#4303/#4304 False Front Clip

2 piece
Screw into place

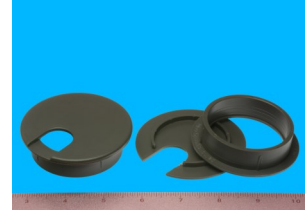




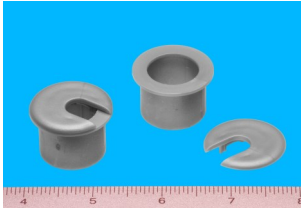
#1040 Grommet
Fits 4" drilled hole
Removable lid
Multiple colors



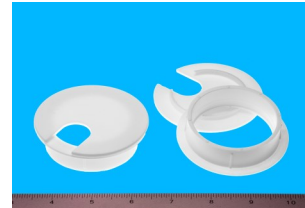
#1031
Cord Grommet
2-1/2" hole 5/8" deep
Multiple colors



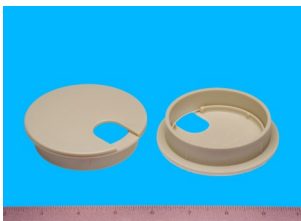
#1041
Cord Grommet
1" hole 5/8" deep
Multiple colors



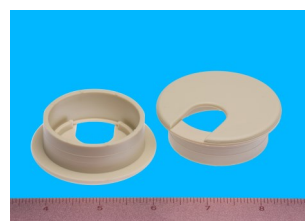
#1038
Cord Grommet
2-3/8" hole
Multiple colors



#1043
Cord Grommet
3" hole
Multiple colors



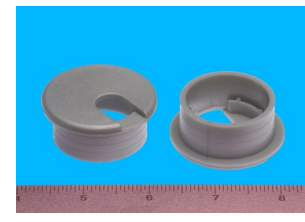
#1035
Cord Grommet
2" hole
Multiple colors



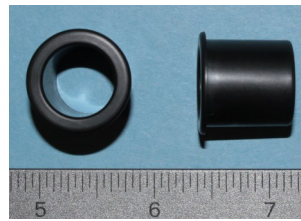
#1039
Cord Grommet
1-3/4" hole
Multiple colors



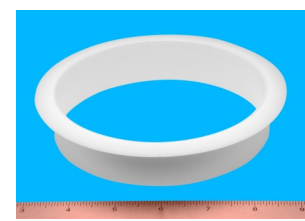
#1037
Cord Grommet
1-1/2" hole
Multiple colors



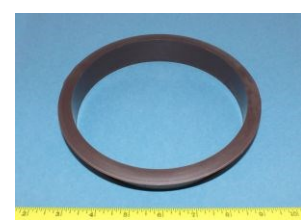
#1108
Finishing Grommet
3/4" hole
Multiple colors



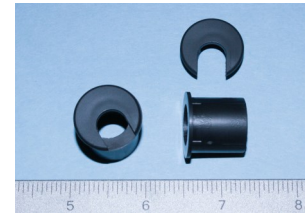
#1047
Trash Ring
5" hole 1" deep
Multiple colors



#1044
Trash Ring
6" hole 1" deep
Multiple colors

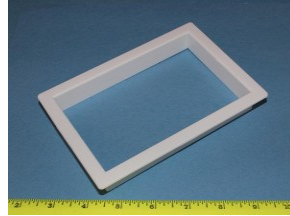


#1048 Cord Grommet
Fits 3/4" drilled hole





#1110 Single Outlet
Access Grommet
5-13/16 X 3-13/16
Multiple colors



#1109
Finishing Grommet
5" X 12"
1" deep
Multiple colors



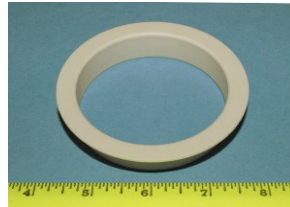
#1034 Double Outlet
Access Grommet
5-1/2" X 5-13/16"
Multiple colors



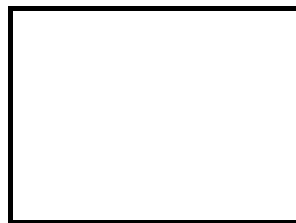
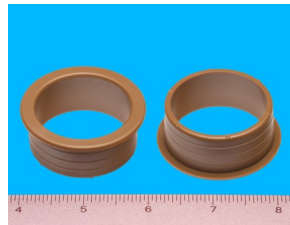
#1106
Finishing Grommet
6-1/8" X 2-1/8"
3/4" deep
Multiple colors



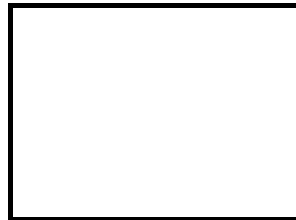
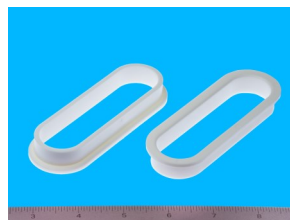
#1107
Finishing Grommet
3" hole
Multiple colors



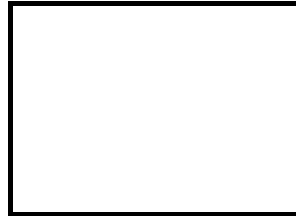
#1050
Finishing Grommet
1-3/4 hole
Multiple colors



#1100
Finishing Grommet
4" X 1-1/4"
Multiple colors

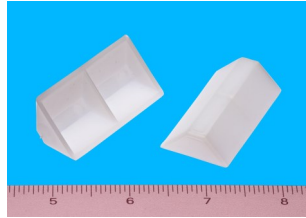


#1105
Finishing Grommet
6-1/4" X 2-3/16"
Multiple colors





#1602
Center rib for strength
3/4" X 3/4" X 2"
Staple in place



#1620 Corner Brace
Alignment tab
2-1/4 X 2-1/4 X 3/4



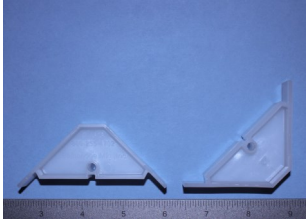
#1615
For tight applications
1/2" X 1/2" X 2"
Staple in place



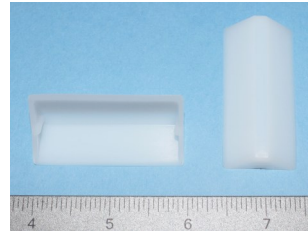
#1619
Corner Brace
4" X 1" X 1"
Staple in place



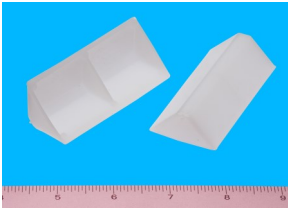
#1623 Corner Brace
Reversible
Easy install
labor saving
2-1/2" x 2-1/2" x 3/4"



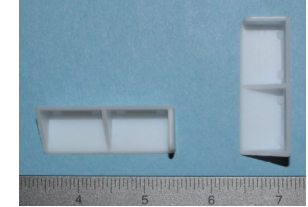
#1609
3/4 X 3/4 X 2
no center rib
Staple in place



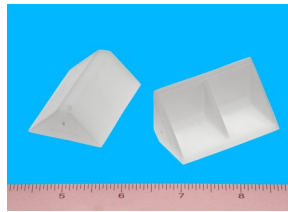
#1603
1" X 1" X 3"
Staple in place



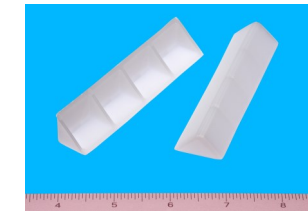
#1614
2" X 3/4" X 3/4" with
added tab for additional
stapling on one end
Staple in place



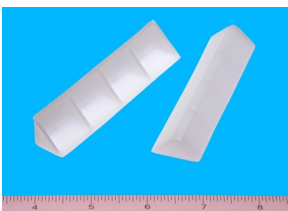
#1657
1" X 1" X 2"
Staple in place



#1604
9/16 X 9/16 X 3
Multiple colors



#1605
5/8" X 5/8" X 4"
Staple in place

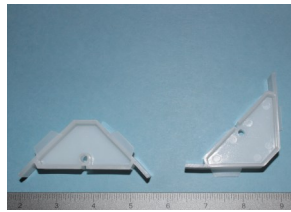


#1699
3/4" X 3/4" X 3-1/2"
Multiple colors
Screw in place

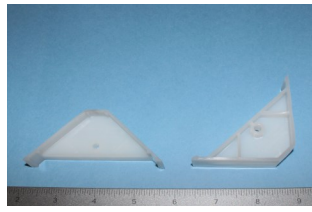




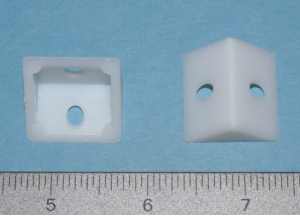
#1622 Corner Brace
Alignment tab
2-1/2 X 2-1/2 X 3/4



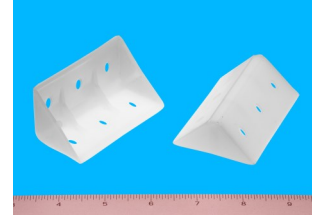
#1608 Brace
2-1/2 X 2-1/2 X 3/4
NO alignment tabs



#1682
3/4" X 3/4" X 1"
Screw in place



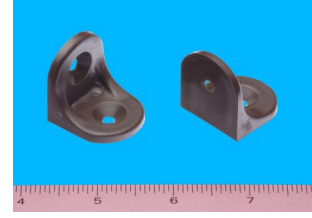
#1683
1-1/2" X 1-1/2" X 3"
Screw in place



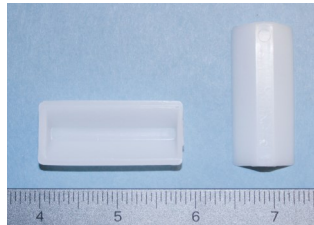
#1684
3/4" X 3/4" X 2-3/4"
Staple in place



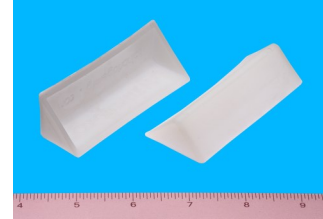
#1685
1-1/8" X 1-1/8"
Screw in place



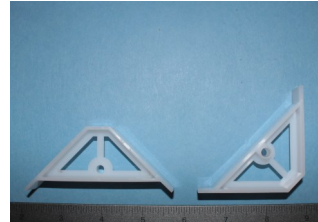
#1689
5/8" X 5/8" X 1-7/8"
Staple in place



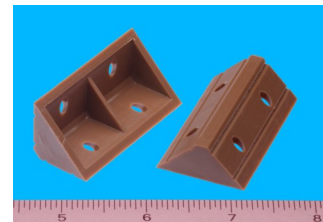
#1692
1" X 1" 3-1/4"
Staple in place



#1610
2-1/2 X 2-1/2 X 3/4
Staple in place



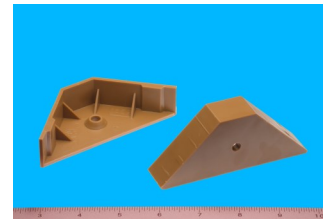
#1698
3/4" X 3/4" X 2"
Screw in place



#1621 Corner Brace
2-1/2" X 2-1/2" X 3/4"

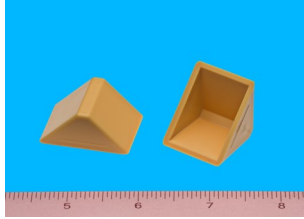


#1659
3" X 3" X 7/8"
Staple in place

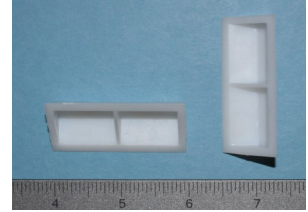




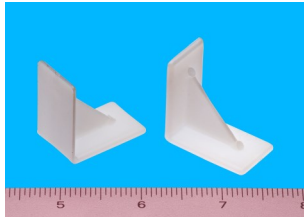
#1664 Brace
1" X 1" X 1"



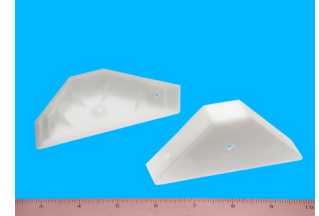
#1613 Brace
Heavy Duty
3/4" X 3/4" X 2"



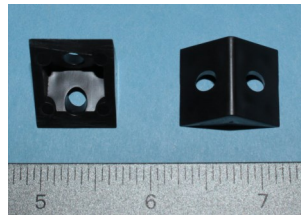
#1680 Staple Brace
1-1/4" X 1-1/4" X 3/4"
Staple in place



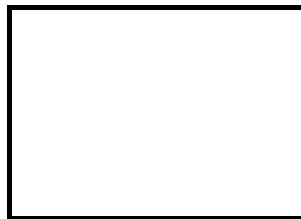
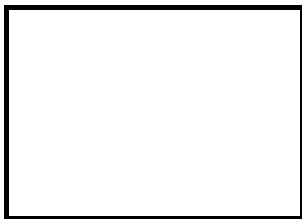
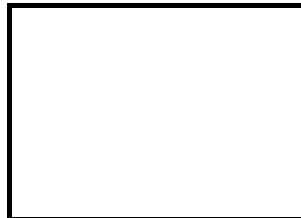
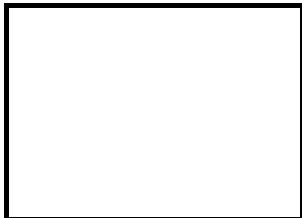
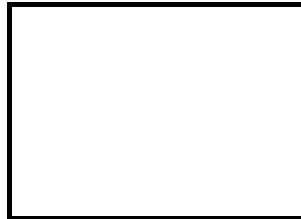
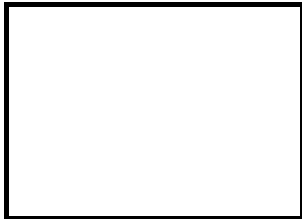
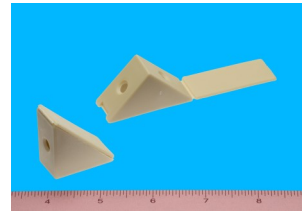
#1665 Heavy Duty Brace
3" X 3" X 7/8"
Has 2 screw holes



#1612 Brace
Small Corner Brace
3/4 X 3/4



#1655 Brace
1-3/4" X 1-3/4"
Folding lid





Drawer Slide Spacers

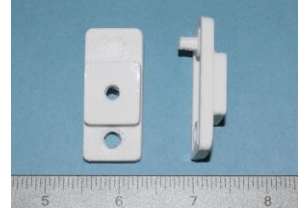
#3616 Slide Spacer
1" thick
holes 64mm apart
5mm peg



#3691 Spacer
Grass Soft close
1/4" thick
5mm peg



#3684 Slide Spacer
3/8" offset
5mm peg



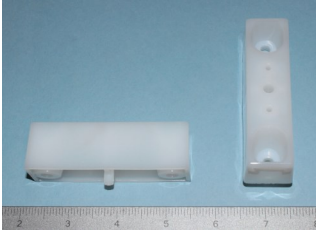
#3603 Slide Spacer
1-7/16" offset
5mm peg



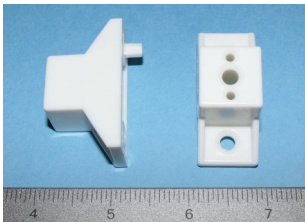
#3683 Slide Spacer
5/8" offset
5mm peg & .200" holes



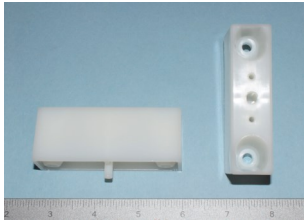
#3693 Spacer
Full extension
1" offset, 5mm peg,
64mm hole to hole



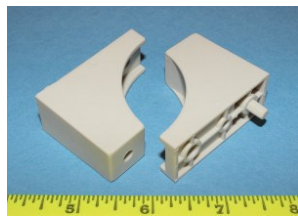
#36021 Slide Spacer
1" thick
5mm peg



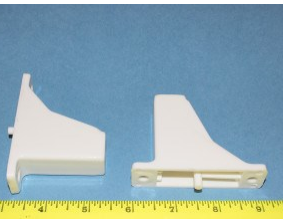
#3694 Spacer
Full extension
1.25" offset, 5mm peg,
64mm hole to hole



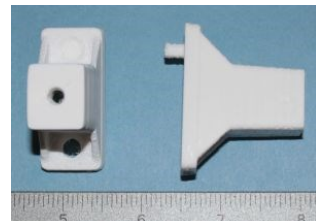
#36441 Slide Spacer
1-1/2" thick
5mm peg



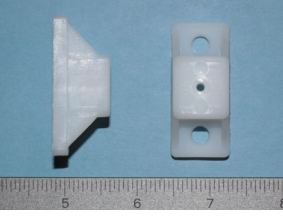
#3613 Slide Spacer
2-3/16" thick
5mm peg



#3686 Slide Spacer
1-1/2" offset
5mm peg & .200" holes



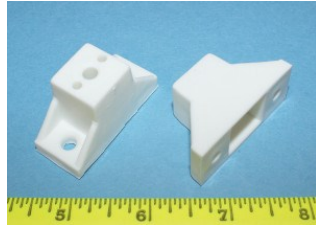
#3689 Spacer
3/4" offset
single small hole .110"



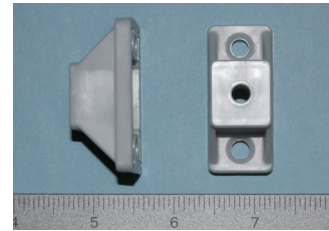


Drawer Slide Spacers

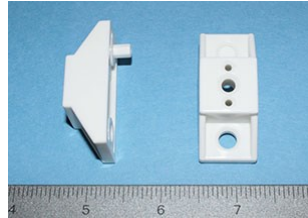
#3602 Slide Spacer
1" Thick,
.190" Holes 32mm apart



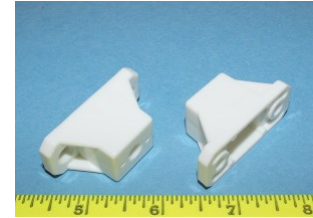
#3682 Slide Spacer
3/4" Thick,
1/4" Holes 32mm apart



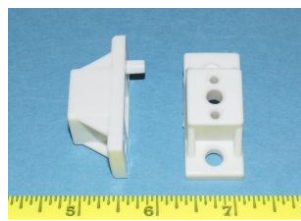
#36261 Slide Spacer
5/8" Thick
5mm peg
Multiple colors



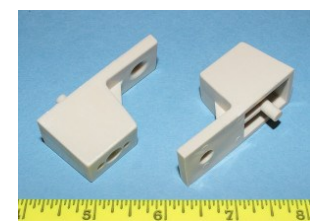
#36071 Slide Spacer
7/8 thick
.205" holes 32mm
apart



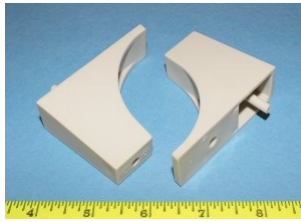
#36011 Slide Spacer
3/4" Thick
5mm peg



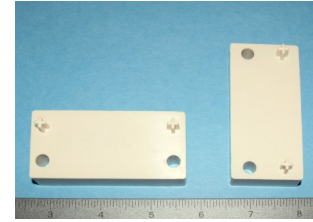
#3627 Slide Spacer
1" thick
5mm peg



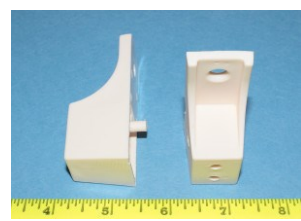
#3636 Slide Spacer
2" thick
5mm peg
One attachment hole



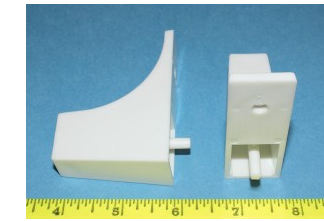
#37001 Adapter
1/2" build up adapter
for Bainbridge
Undermount spacers
M



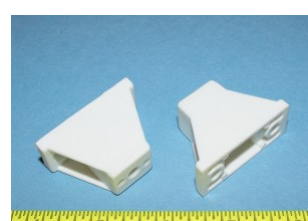
#3622 Slide Spacer
1-1/8" thick
5mm peg



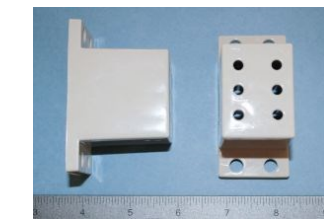
#3620 Slide Spacer
2" thick
5mm peg



#3604 Slide Spacer
1-1/4" Thick
1/4" holes 32mm apart



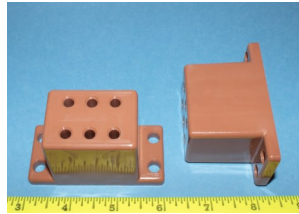
#3698 Under Mount
6 hole Spacer
50mm Offset





Drawer Slide Spacers

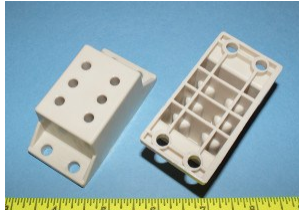
#3639 Slide Spacer
1-3/4" Thick



#3652 Slide Spacer
5/8" Thick



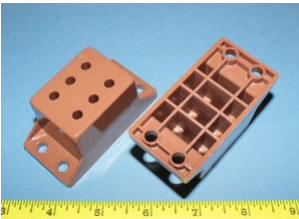
#3695 Slide Spacer
1" Thick



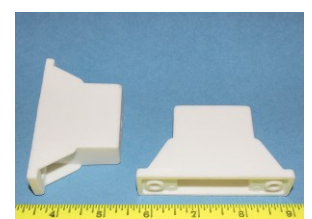
#3692 Slide Spacer
1-1/4" Thick



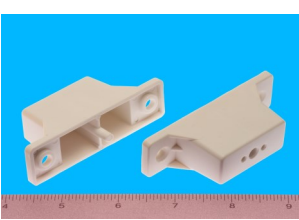
#3643 Slide Spacer
1-1/2" Thick



#3630 Slide Spacer
1-7/8" thick
Holes 64mm apart
no peg



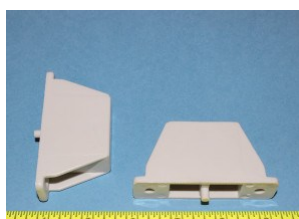
#3669 Slide Spacer
1-1/4" thick
holes 64mm apart
5mm peg



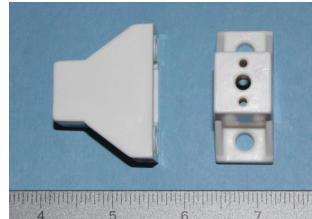
#36161 Slide Spacer
1" thick,
holes 64mm apart
no peg



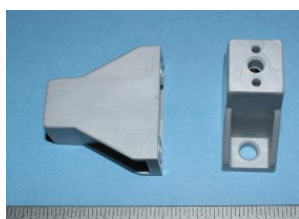
#3615 Slide Spacer
42mm thick,
holes 64mm apart
5mm peg



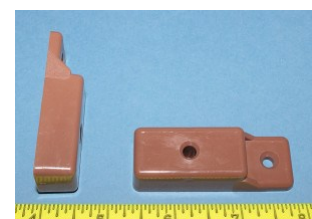
#36241 Slide Spacer
1/4" holes 32mm apart
35 mm Thick a



#3631 Slide Spacer
1-3/4" Thick,
1/4" Holes 32mm apart



#3651 Slide Spacer
15mm thick
holes 32mm ctr. to ctr.
no peg





Drawer Slide Spacers

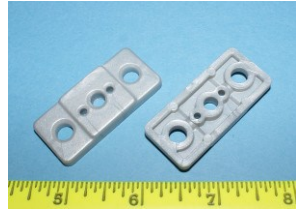
#3658 Slide Spacer
1/8" Thick,
1/4" Holes 32mm apart



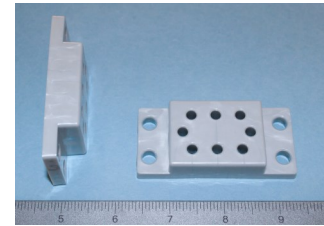
#36061 Slide Spacer
1/4" Thick
205" holes 32mm apart



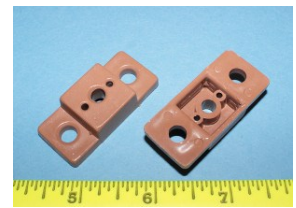
#3606 Slide Spacer
1/4" Thick,
1/4" Holes 32mm apart



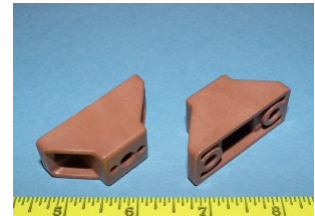
#36521 Under Mount / Hinge
8 hole Spacer
5/8" Offset



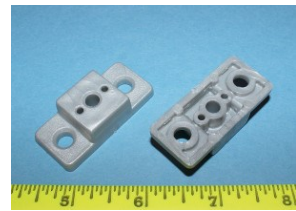
#3649 Slide Spacer
7/16" Thick,
1/4" Holes 32mm apart



#3607 Slide Spacer
7/8"
.242" Holes 32mm apart



#3600 Slide Spacer
1/2" Thick,
1/4" Holes 32mm apart



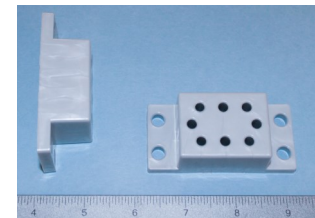
#3626 Slide Spacer
5/8" Thick,
1/4" Holes 32mm apart



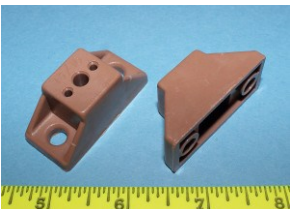
#3674 Spacer
11/16 Thick
1/4" Holes 32mm apart



#36951 Under Mount / Hinge
8 hole Spacer
1" Offset



#3628 Slide Spacer
13/16" Thick,
1/4" Holes 32mm apart



#3609 Slide Spacer
1-1/4" thick
5mm peg



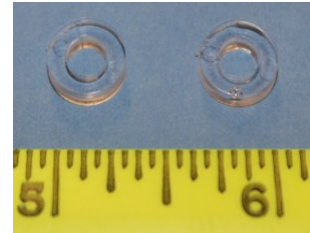


Drawer Slide Spacers

#3605 Slide Spacer
3/8" Thick,
1/4" Holes 32mm apart



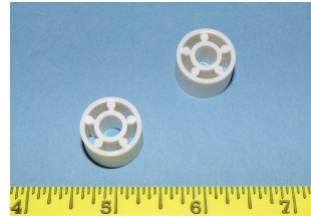
#3672 Round Spacer
3/16" ID
3/8" OD
1/8" thick



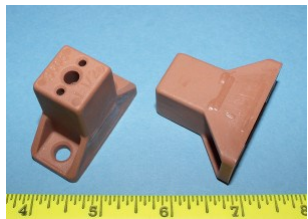
#3624 Slide Spacer
1/4" holes 32mm apart
35 mm thick attach
slide with wood screw



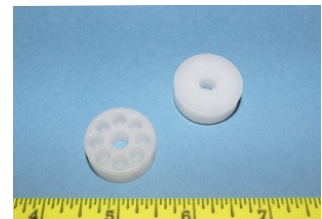
#3617 Round Spacer
1/2" thick
5/8" OD
1/4" ID



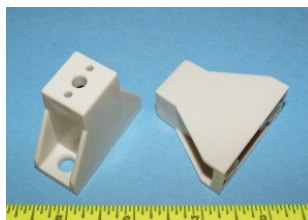
#3675 Slide Spacer
1-1/2" Thick
1/4" Holes 32mm apart



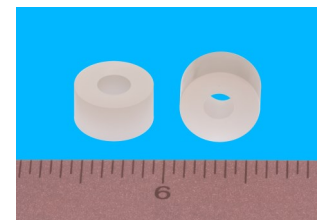
#3612 Round Spacer
1/4" thick
1" OD
1/4" ID



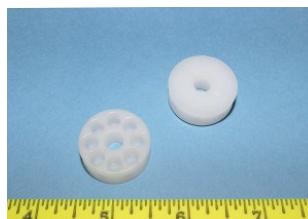
#3632 Slide Spacer
1-5/8" Thick,
1/4" Holes 32mm apart



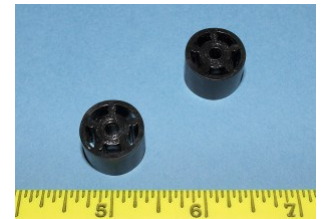
#3668 Round Spacer
1/4" thick
1/2" OD
3/16" ID.



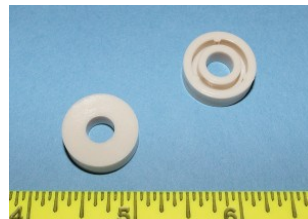
#3625 Round Spacer
3/8" thick
1" OD
1/4" ID



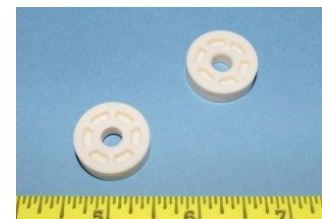
#3614 Round Spacer
1/2" thick
5/8" OD
1/8" ID



#3654 Round Spacer
1/4" thick
3/4" OD
7mm ID



#3650 Round Spacer
7mm" thick
7/8" OD

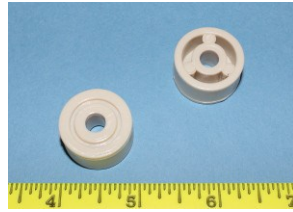




Drawer Slide Spacers

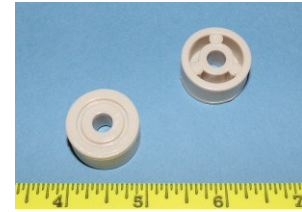
#3611 Round Spacer

1/2" thick
1" OD
1/4" ID



#3610 Round Spacer

5/8" thick
1" OD
1/4" ID



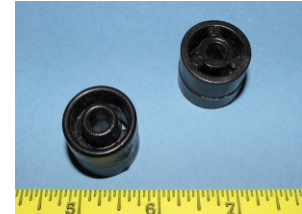
#3653 Round Spacer

11/16" thick
1-3/8" OD
1/4" ID



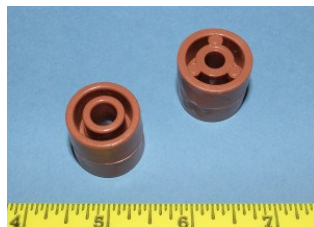
#3646 Round Spacer

3/4" thick
15/16" OD
1/4" ID



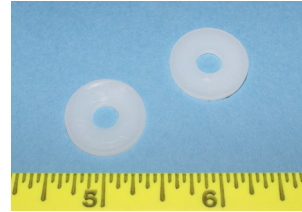
#3688 Round Spacer

7/8" thick
1" OD
1/4" ID



#3642 Round Spacer

1/16" thick
3/4" OD



#3671 Round Spacer

1/8" ID
1" thick
1-1/8" O.D.



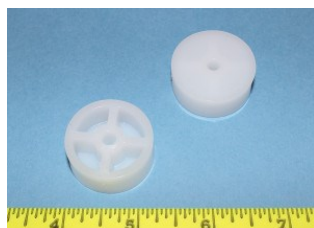
#3618 Round Spacer

1/8" thick
3/4" OD
1/4" ID



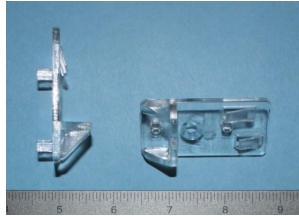
#3670 Round Spacer

1/8" ID
1/2" thick
1-1/8" O.D.

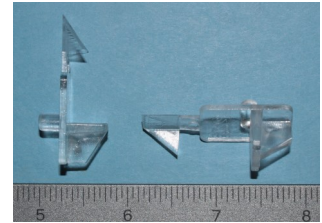




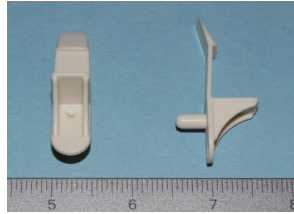
#3206 Commercial
Two 5mm .290 long
round pegs 32mm apart
for 3/4" or 1" Shelf
Center screw hole



#3226 Kitchen
Disappearing
5mm round .230 long
peg for 3/4" Shelf



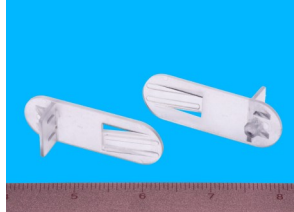
#3270 Vanity
5mm peg .375 long
3/4" Shelf



#3227 Commercial
Two 5mm round .260
long pegs 32mm apart
for 3/4 shelf



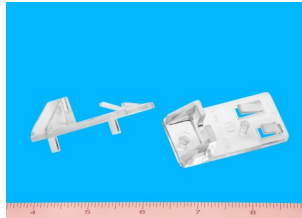
#3200 Kitchen
5mm hex peg .245 long
for 3/4 shelf



#3203 Kitchen
5mm hex peg .300 long
for 3/4 shelf
Horizontal lock feature



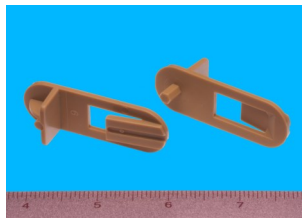
#32201 Commercial
5mm hex pegs .290 long
32mm apart
3/4" OR 1" Shelf
BHMA CERTIFIED



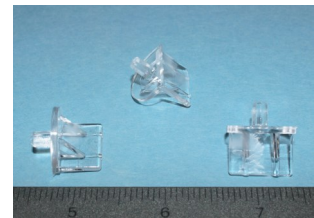
#3233 Kitchen
5mm hex peg .300 long
for 5/8" shelf



#3235 Kitchen
5mm hex peg .280 long
for 3/4" shelf



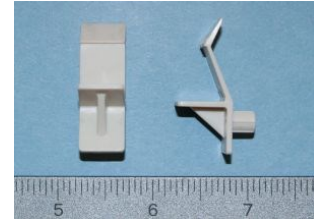
#3266 Vanity
Low Profile
5mm hex peg
290 long



#3253 Kitchen
5mm hex peg .295 long
for 3/4" Shelf



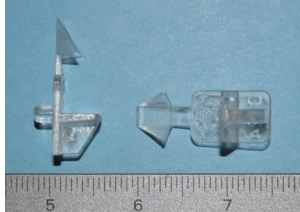
#32541 Shelf Support
1/4" Peg
1/2" Shelf



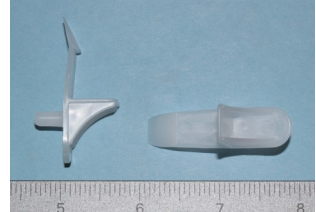


Shelf Supports

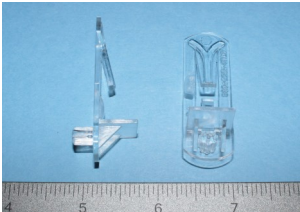
#3224 Kitchen
Disappearing
5mm round .230 long
peg for 5/8" Shelf



#3269 Vanity
5mm peg .380 long
5/8" Shelf



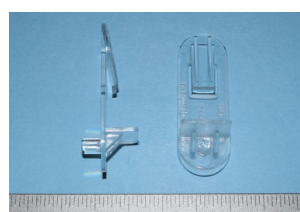
#3202 Kitchen
1/4" Peg
1/2" Shelf
Multiple colors
Horizontal lock feature



#3249 Shelf Support
1/4" Peg
1/2" Shelf



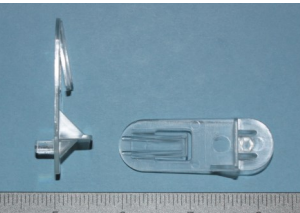
#32231 Kitchen
5mm hex peg .300 long
5/8" Shelf



#3252 Commercial
5mm steel peg
1/2" shelf



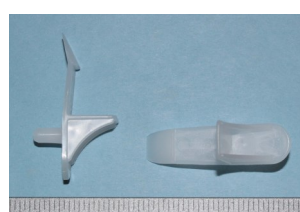
#32231R / #32231L
5mm hex peg - 5/8" .
300 long Handed
R and L



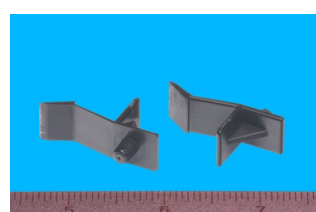
#3218 Kitchen
5mm hex .280 long peg
for 1/2" Shelf



#32691 Vanity
5mm peg .300 long
5/8" Shelf



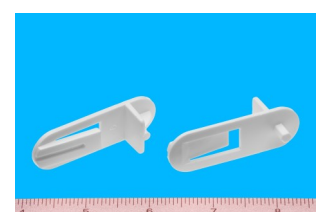
#3250 Vanity
5mm hex peg .255 long
1/2" Shelf



#3247 Commercial
5mm steel peg
5/8" shelf C

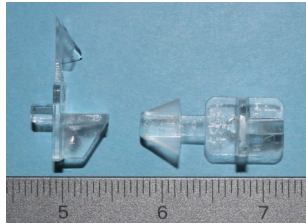


#3237 Kitchen
5mm hex peg .290 long
for 1/2" shelf

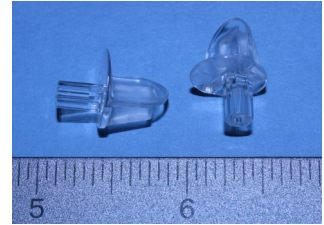




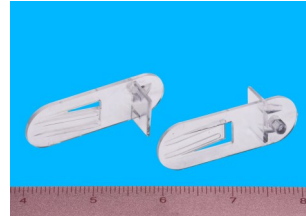
#3222 Kitchen
Disappearing
5mm round .230 long
peg for 1/2" Shelf



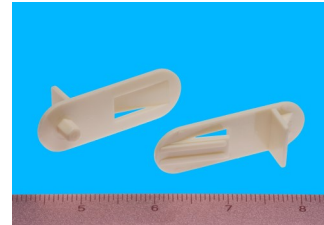
#18153 Vanity
5mm round peg
300 long peg



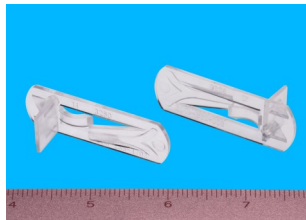
#3248 Kitchen
5mm .270 long hex Peg
for 1/2" Shelf



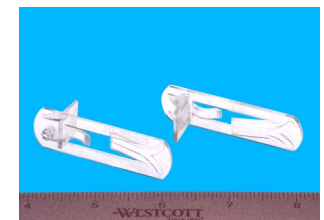
#3246 Kitchen
1/4" Peg
5/8" Shelf



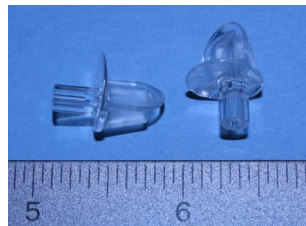
#3204 Kitchen
5mm hex Peg .300 long
for 1/2" Shelf
Horizontal snap lock



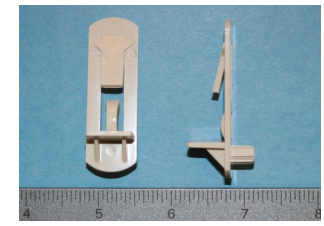
#3201 Kitchen
1/4" peg
3/4 Shelf
Multiple colors
Horizontal lock feature



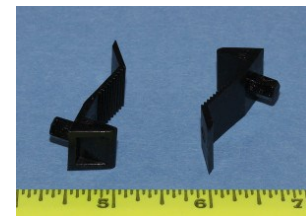
#18152 Vanity
5mm hex peg
300 long peg



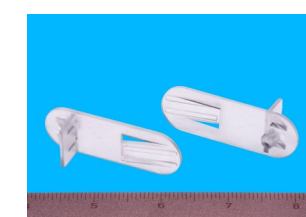
#3258 Kitchen
1/4" Peg
5/8" Shelf
Horizontal lock feature



#3264 Furniture
Universal 1/2" - 3/4"
1/4" peg



#3245 Shelf Support
1/4" peg
3/4" Shelf
Peg length .230





Bainbridge Manufacturing, Inc.

Plastic Hardware Specialists | Cabinet Master® Plastic Hardware

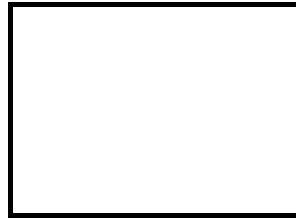
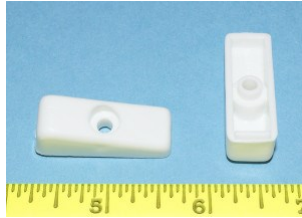
PO Box 487, 237 W. 3rd Street Waterville, WA 98858

1-509-745-9555 | info@bainbridgemfg.com

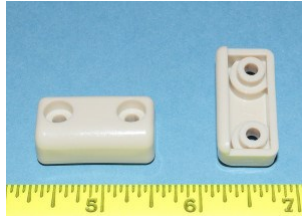
www.bainbridgemfg.com

Drawer Bumpers

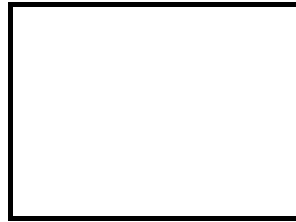
#4602 Drawer Bumper
1/2" thick
reference tab



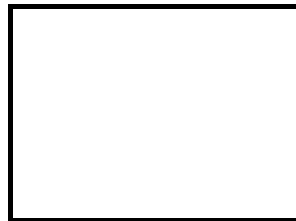
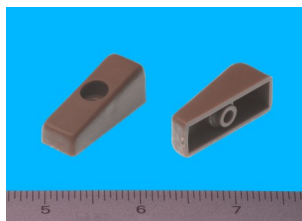
#4600 Drawer Bumper
3/8" thick
reference tab



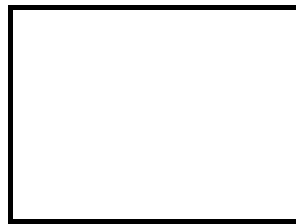
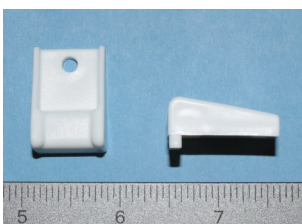
#4604 Drawer Bumper
1/2" thick
reference tab



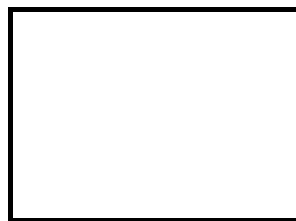
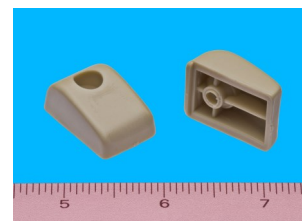
#4603 Drawer Bumper
1/2" thick
no reference tab



#4606 Drawer Bumper
1/2" thick
Reference tab



#4601 Drawer Bumper
7/16" thick
reference tab





#4501 Vent Grill

Fits 2" hole
5/8 deep walls
Multiple colors



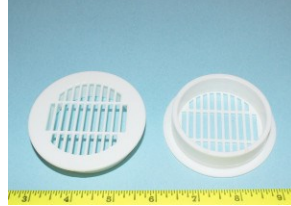
#4505 Vent Grill

2-5/8" X 8-21/32"
1/4 deep walls
Multiple colors



#4500 Vent Grill

Fits 2-1/2" hole
5/8 deep walls
Multiple colors



#4506 Vent Grill

2-1/2" X 10"
1/4" deep walls
Multiple colors



#4502 Vent Grill

Fits 3" hole
5/8 deep walls
Multiple colors



#4503 Vent Grill

2-3/8" X 8-5/8"
3/8 Deep walls
Multiple colors



#4504 Vent Grill

2-5/8" X 8-21/32"
1/4 deep walls
Has screw holes
Multiple colors



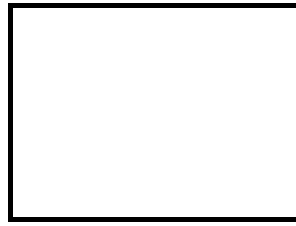
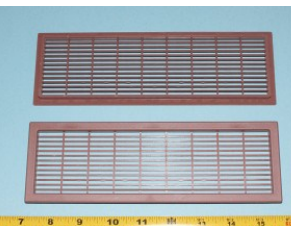
#4508 Vent Grill

2" X 4" rectangle hole
3/4" deep walls
Multiple colors



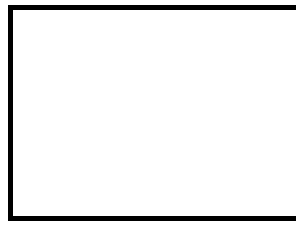
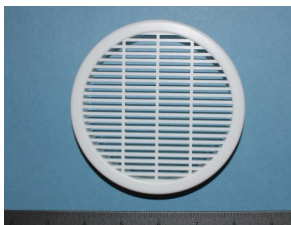
#4509 Vent Grill

2-7/16" X 8-3/8"
3/8 deep walls
Multiple colors



#4507 Vent Grill

4" Round hole
3/4" deep walls
Multiple colors





Bainbridge Manufacturing, Inc.

Plastic Hardware Specialists | Cabinet Master® Plastic Hardware

PO Box 487, 237 W. 3rd Street Waterville, WA 98858

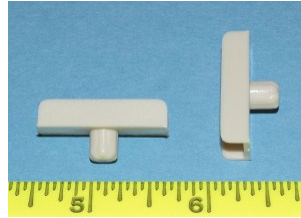
1-509-745-9555 | info@bainbridgemfg.com

www.bainbridgemfg.com

Vertical Divider Clips

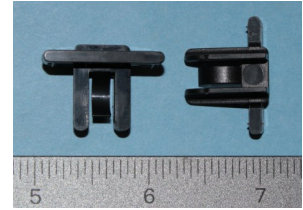
#4205 Divider Clip

5mm diameter peg
Holds 1/4" thick board
Multiple colors



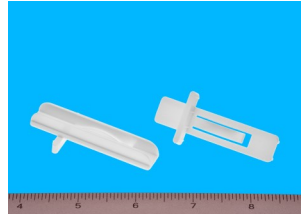
#4212 Divider Clip

3/4" long
1/8" saw slot
1/4" panel
Multiple colors



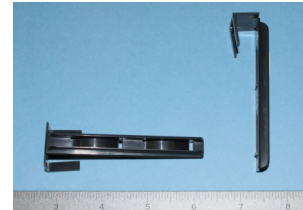
#4206 Divider Clip

1/8" saw slot tab,
Holds 1/4" thick board
Multiple colors



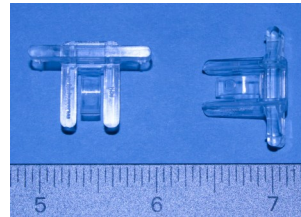
#4210 Divider Clip

1/2" drawer side
1/4" thick board
3-1/2" long



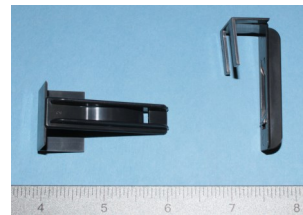
#4214 Divider Clip

7mm panel 3/4" long
(1/8" saw slot tab)
Multiple colors



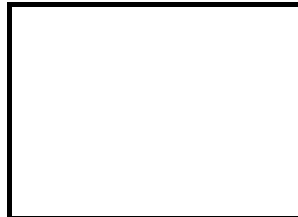
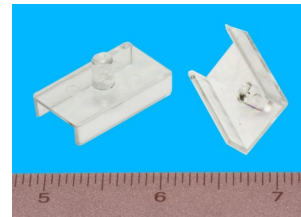
#4211 Divider Clip

1/2" drawer side
1/4" thick board
2" long



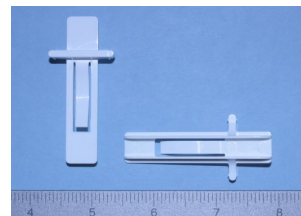
#4203 Divider Clip

5mm diameter peg
Holds 1/2" thick board
Multiple colors



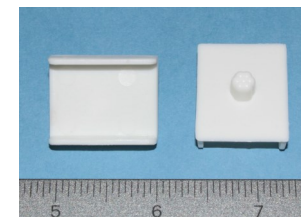
#4213 Divider Clip

7mm panel 2-3/8" long
(1/8" saw slot tab)
Multiple colors



#4207 Divider Clip

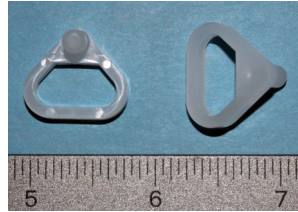
5mm diameter peg
Holds 3/4" thick board
Multiple colors



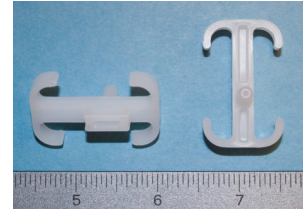


Shelf Hold Down Clips

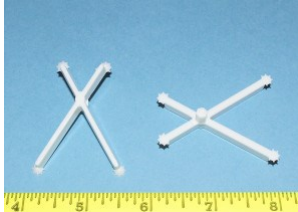
#3405
Shelf Hold Down
5mm peg w/lead in
1/8" wide



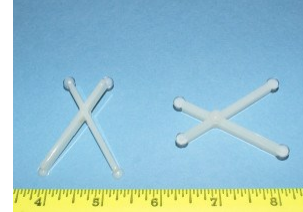
#3412 Shelf Hold Down
1" & 3/4" shelf
5mm peg - install with
special tool



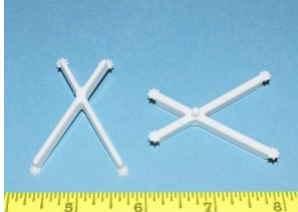
#3411
Shelf Hold Down
5mm peg
STAR ENDS



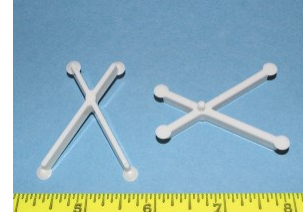
#3408
Shelf Hold Down
5mm peg
ROUND ENDS



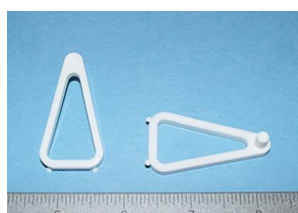
#3409
Shelf Hold Down
3mm peg
STAR ENDS



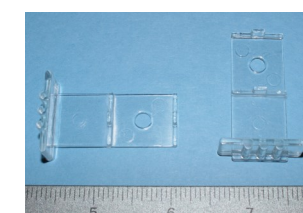
#3406
Shelf Hold Down
3mm peg
ROUND ENDS



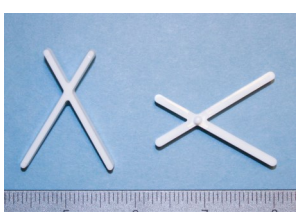
#3400
Shelf Hold Down
5mm peg
1/4" wide



#3401 Shelf Retainer
Shipping clip for 5mm
peg shelf supports to
keep shelf from sliding
forward



#3413
Shelf Hold Down
3mm peg
STUB ENDS



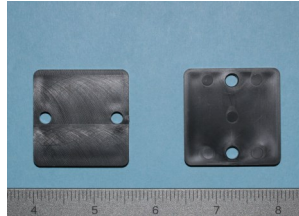
#3410
Shelf Hold Down
5mm peg
1/8" wide





Hinge , Catch & Lock Spacers

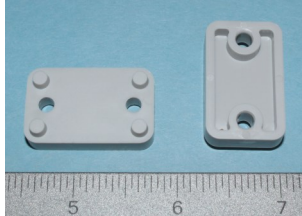
#3519 Spacer
Hafele LOOX LED IR
Switch spacer
1/8" thick
Multiple colors



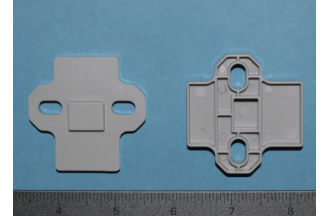
#3509 Hinge Plate Spacer
3mm thick - stackable
Multiple colors



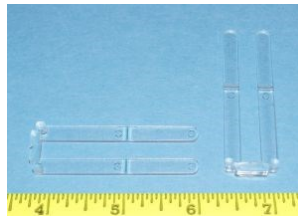
#3520 Hinge Spacer
1/4" Thick



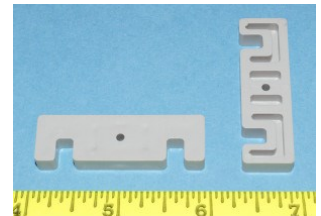
#3502 Hinge Plate Spacer
5mm thick



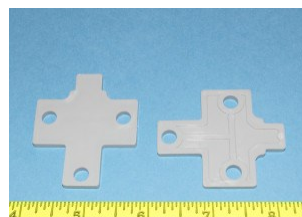
#3510 Hinge Plate Spacer
1/16" thick - snaps in half for smaller hinges



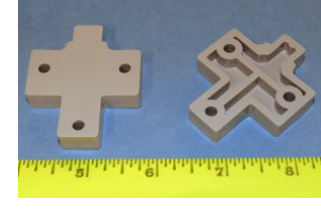
#3512 Hinge Plate Spacer
1/4" thick



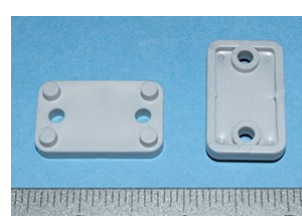
#3506 Hinge Plate Spacer
1/8" thick
Large holes for 7.8mm euro screw



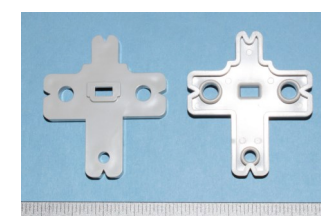
#3505 Hinge Plate Spacer
screw holes at .188"
1/4" thick



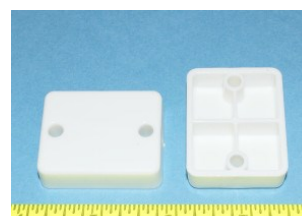
#3511 Magnetic Catch Spacer
3/16" thick
Fits Hafele 246.15



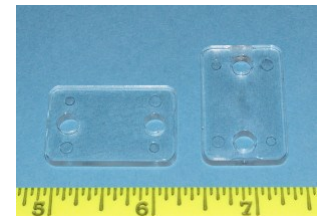
#3501 Hinge Plate Spacer
7.6 mm Thick



#3503 Catch Spacer
1/2" thick
2 holes 32mm apart



#3516 Catch Spacer
1/8" thick
3/4" X 1-1/4"





Bainbridge Manufacturing, Inc.

Plastic Hardware Specialists | Cabinet Master® Plastic Hardware

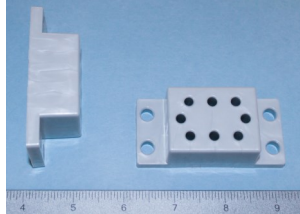
PO Box 487, 237 W. 3rd Street Waterville, WA 98858

1-509-745-9555 | info@bainbridgemfg.com

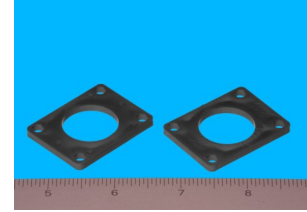
www.bainbridgemfg.com

Hinge, Catch & Lock Spacers

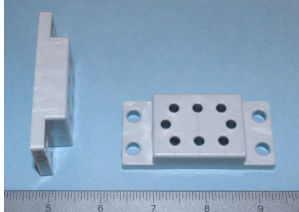
#36951 Under Mount / Hinge Spacer
8 hole Spacer
1" Offset
Multiple colors



#3517 Lock Spacer
1/8" thick with 4 screw holes
Black



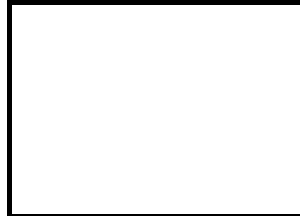
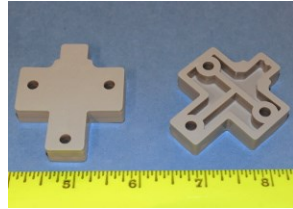
#36521 Under Mount / Hinge Spacer
8 hole Spacer
5/8" Offset
Multiple colors



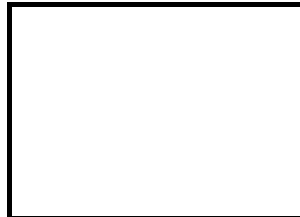
#3521 Lock Spacer
1-11/16 X 1-11/16
3/8" thick
3/4 X 7/8 oblong hole
White



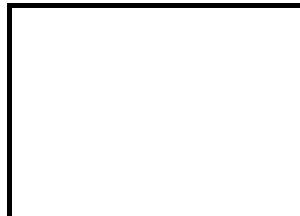
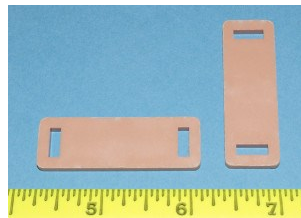
#3508 Hinge Plate Spacer
Small holes for 7mm euro screw
3/8" thick



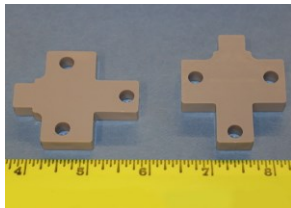
#3513 Catch Spacer
1/4" thick with small holes for wood screws



#3515 Catch Spacer
1/8" thick
3/8" X 1-1/2"



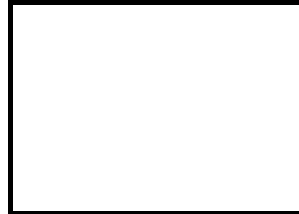
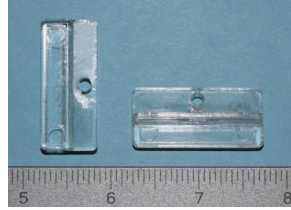
#3507 = 1/4"
#3504 = 3/8"
Hinge Plate Spacer
screw holes at .245"



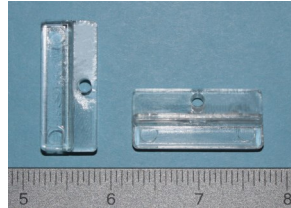


Screen and Door Panel Clips

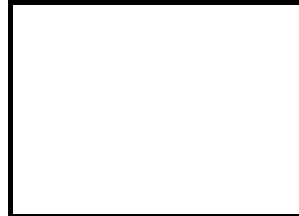
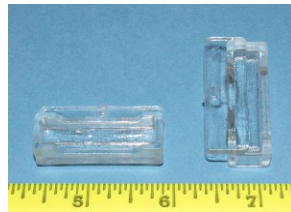
#1806
Straight Clip
1/8" thick
Attach with screw
Clear and colors



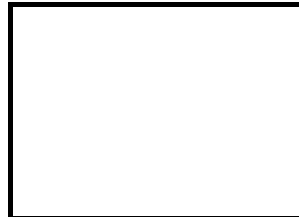
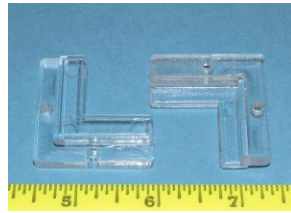
#1807
Straight Clip
3/16" thick
Attach with screw
Clear and colors



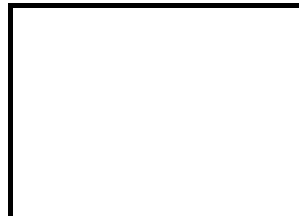
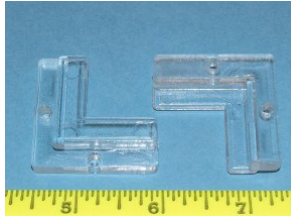
#1809
Straight Clip
3/8" thick
Attach with screw
Clear and colors



#1804
Corner Clip
1/8" thick
Attach with screw
Clear and colors



#1805
Corner Clip
3/16" thick
Attach with screw
Clear and colors





Bainbridge Manufacturing, Inc.

Plastic Hardware Specialists | Cabinet Master® Plastic Hardware

PO Box 487, 237 W. 3rd Street Waterville, WA 98858

1-509-745-9555 | info@bainbridgemfg.com

www.bainbridgemfg.com

Screen Clips

#1803
Screen Clip
Flush



#1858
Screen Clip
1/16"



#1813
Screen Clip
1/8"



#1853
Screen Clip
3/16"



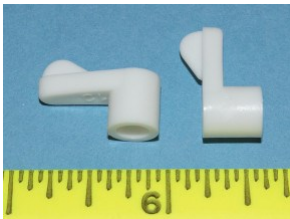
#1823
Screen Clip
3/16"



#1862
Screen Clip
Flush



#1854
Screen Clip
1/4"



#1852
Screen Clip
1/16"



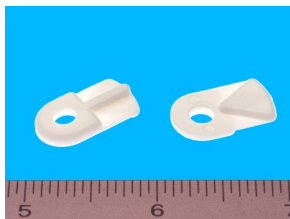
#1855
Screen Clip
5/16"



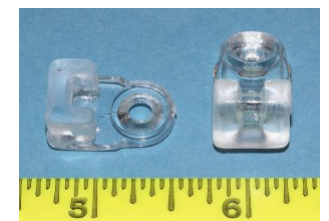
#1857
Screen Clip
1/8"



#1820
Screen Clip
Flush



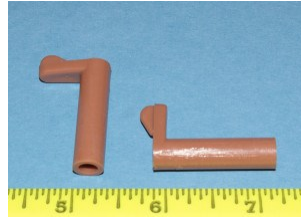
#1810
Screen Clip
1/4"



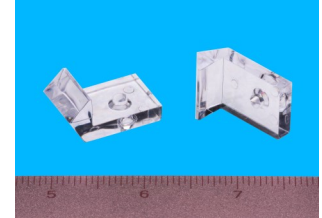


Screen and Mirror Clips

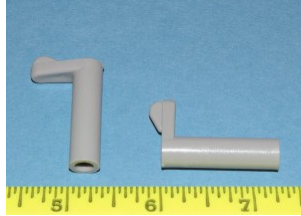
#1863
Screen Clip
1-3/16"



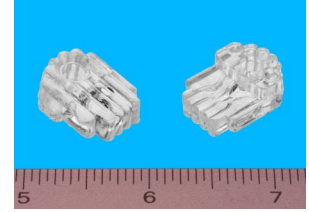
#1866
Mirror Clip
Side Mount



#1850
Screen Clip
1-1/8"



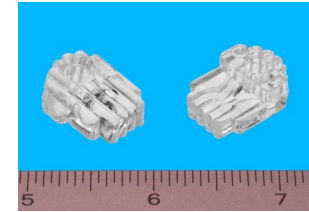
#1859
Mirror Clip
1/4"



#1856
Screen Clip
3/8"



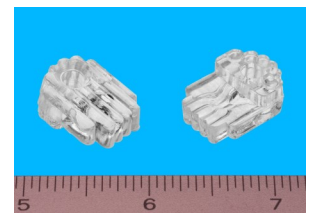
#1861
Mirror Clip
1/8"



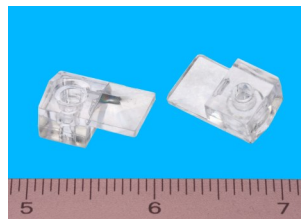
#1851
Screen Clip
7/16"



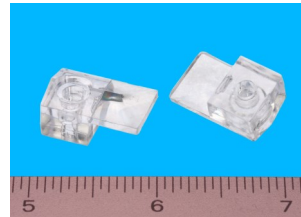
#1860
Mirror Clip
3/16"



#1865
Mirror Clip
1/8"

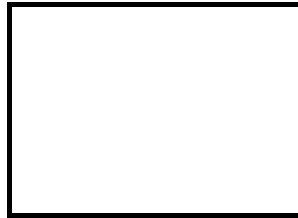
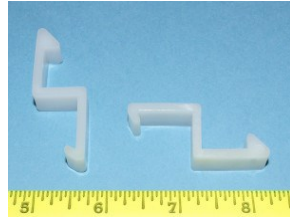


#1864
Mirror Clip
1/4"

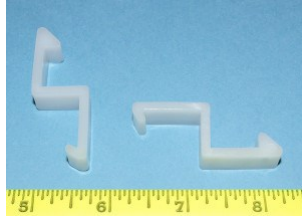




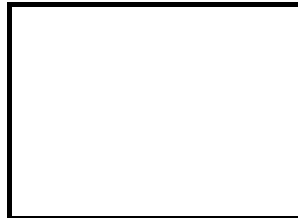
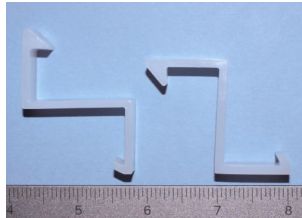
#3300 Door Clip
Small Doors
5/8 X 3/4



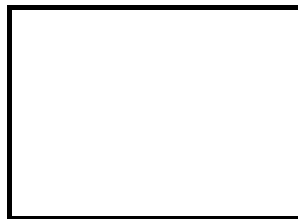
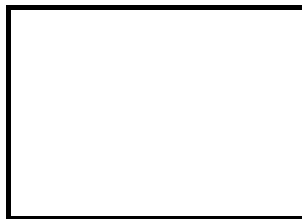
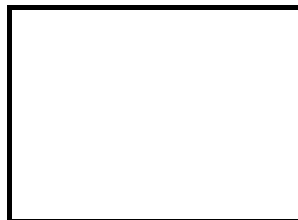
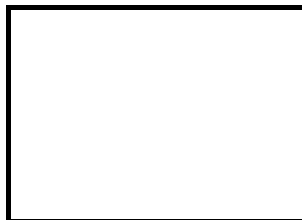
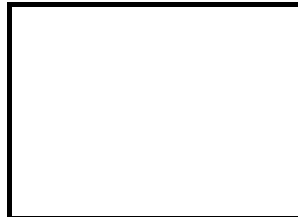
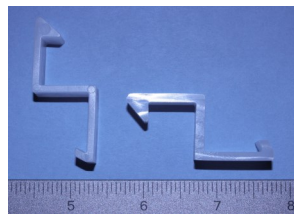
#3301 Door Clip
Large Doors
3/4" X 3/4"



#3302 Door Clip
3/4 X 3/4 X 1-23/64



#3303 Door Clip
3/4 X 21/32 X 21/32





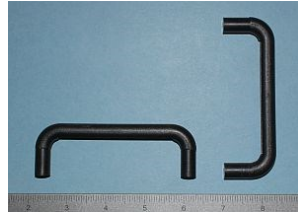
#1710 Drawer Pull
Inset and has holes for
two #6 wood screws
Multiple colors



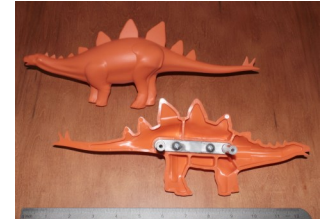
#1724 Velociraptor
HUGE 8" Long Rubber
Drawer Pull
Peg 3" apart
Multiple colors



#1722 Drawer Pull
96mm hole spacing
No threads Use #8
sheet metal screw
Multiple colors



#1725 Stegosaurus
HUGE 11-1/2" Long
Rubber Drawer Pull
Pegs 3" apart
Multiple colors



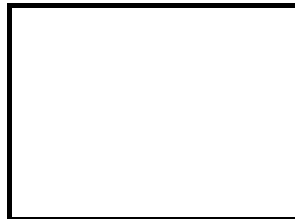
#1718 Triceratops
HUGE 7" Long Rubber
Drawer Pull
Pegs 3" apart
Multiple colors



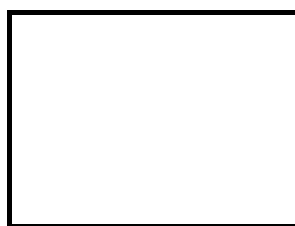
#1727 Pleisosaur
HUGE 11" Long
Rubber Drawer Pull
Pegs 3" apart
Multiple colors



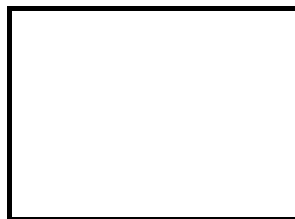
#1719 Long Neck
HUGE 11" Long
Rubber Drawer Pull
Pegs 3" apart
Multiple colors



#1723 Tyrannosaurus
HUGE 7-1/2" Long
Rubber Drawer Pull
Pegs 3" apart
Multiple colors

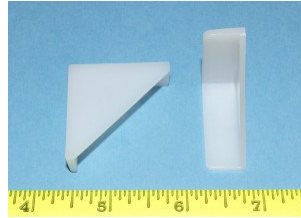


#1726 Pterodactyl
HUGE 11-1/2" Long
Rubber Drawer Pull
Pegs 3" apart
Multiple colors

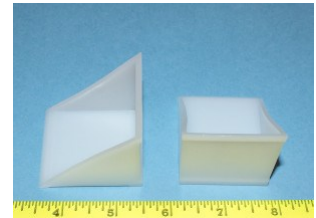




#5405
Corner Protector
1-1/4" X 1-1/4"



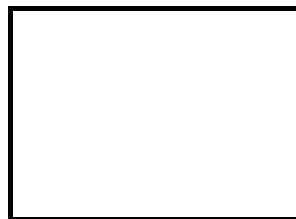
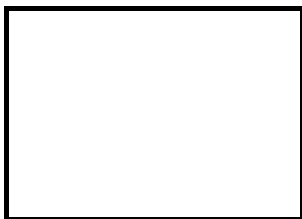
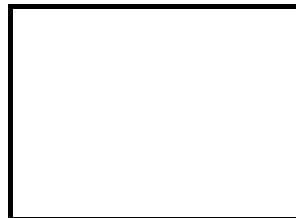
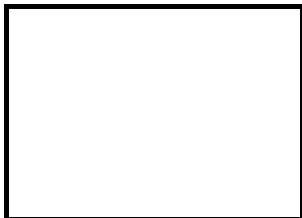
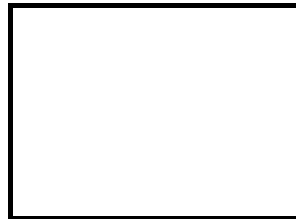
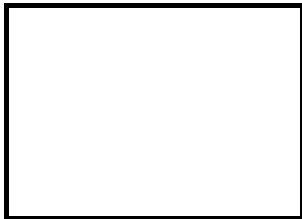
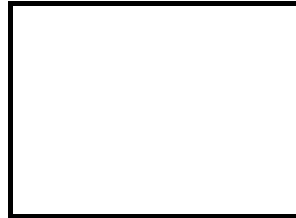
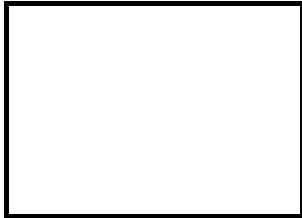
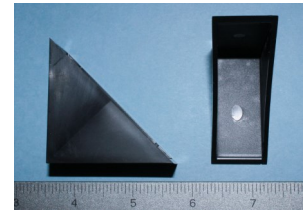
#1500
Corner Protector
Fits 1-1/2" thick board



#15011
Corner Protector
3" X 3"

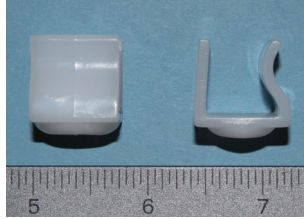


#5600
Corner Protector
3/4" thick board

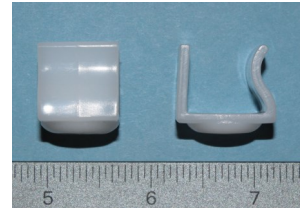




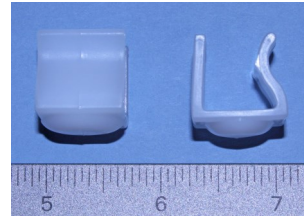
#5402 Slide Glide
snap on to a 1/2"
cabinet sidewall to slide
cabinet in shop



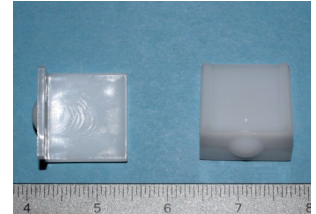
#5403 Slide Glide
snap on to a 5/8"
cabinet sidewall to slide
cabinet in shop



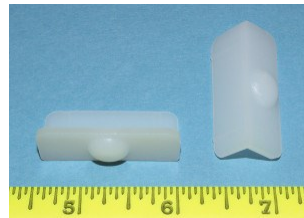
#54021 Slide Glide
snap on to a 12mm
cabinet sidewall to slide
cabinet in shop



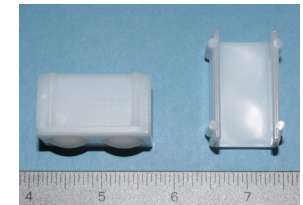
#5404 Slide Glide
Staple in place



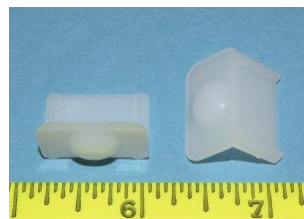
#1928 Slide Glide
1-1/2" X 9/16"
1/8" thick bump
staple in place.



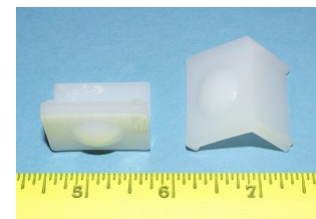
#1988 Slide Glide
snap on to 3/4" thick
material and staple in
place



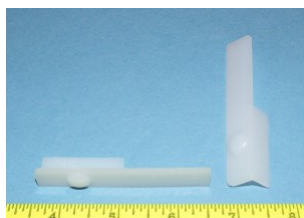
#1947 Slide Glide
7/8" X 1/2" X 1/2"
staple in place for small
applications



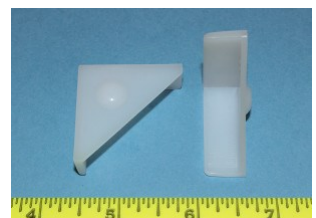
#1983 Slide Glide
1-1/8" X 3/4 X 7/8"
staple in place.



#1985 Slide Glide
1-1/2" long X 9/16"
1/8" thick bump
safety tab for holding



#1914 Slide Glide
Has slide bump for
bottom attachment
1-1/4" X 1-1/4"



#5401 Slide Glide
Snap on to 3/8 thick
material and staple in
place



#19882 Slide Glide
snap on to 1" thick
material and staple in
place

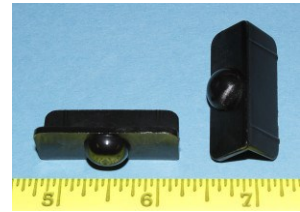




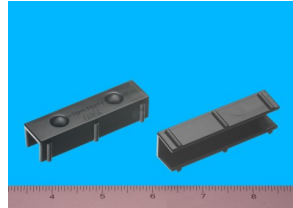
#1903 Slide Glide
1-5/8" long X 3/4" wide
X 3/16" thick — staple
in place.



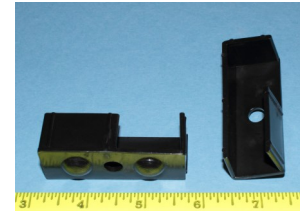
#19281 Slide Glide
1-1/2" X 9/16"
3/16" bump on bottom



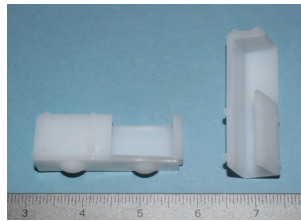
#1989 Slide Glide
1/2"



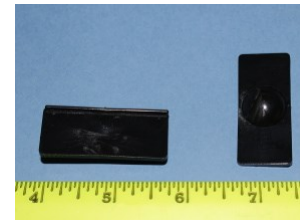
#5406 Slide Glide
2-1/2" X 3/4"



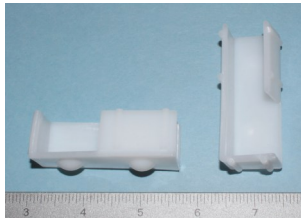
#19881 Slide Glide
2-5/8" X 1/2"



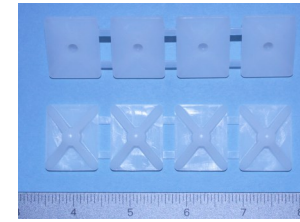
#1906 Slide Glide
1-3/4" long 3/4" wide
with 5/16" thick bump
staple in place.



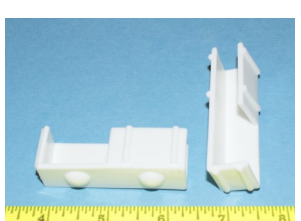
#19886 Slide Glide
2-1/2" X 3/4"



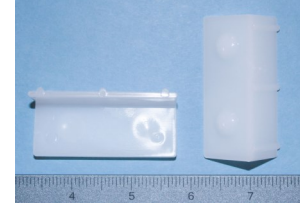
#5407 Slide Glide
1" X 1-1/8"
Strip of 4—break off
after stapling in place



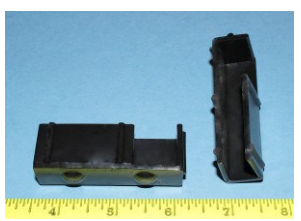
#19887 Slide Glide
2-5/8" X 1/2"



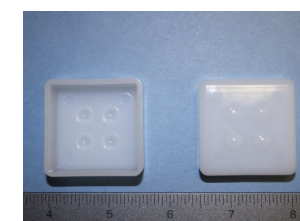
#5411 Slide Glide
Staple on
single sided
2 glide bumps
2-3/8" long



#1946 Slide Glide
2" long X 3/4" wide X
1/2" wide , staple in
place on corner.

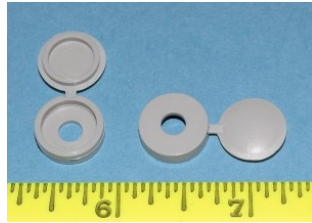


**#5410 Furniture Leg
Protector Glide**
4 glide bumps
1-3/8" X 1-3/8"

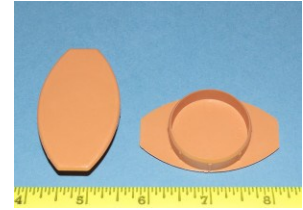




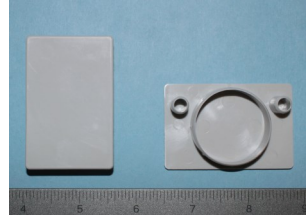
#1930 Screw Cover
Fold over lid to hide screw.
Multiple colors



#1932 Hinge Cover
Covers 35mm extra hinge holes
Multiple colors



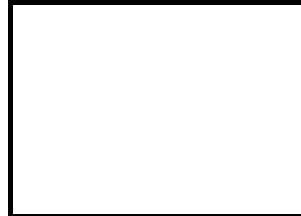
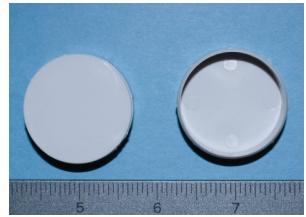
#19221 Hinge Hole Cover
For 35mm holes
Multiple colors



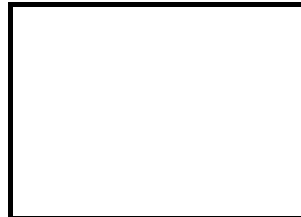
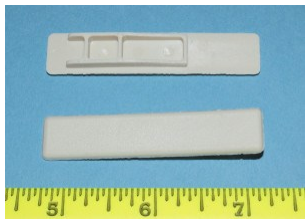
#1922 Hinge Cover
Covers 35mm extra hinge holes
Multiple colors



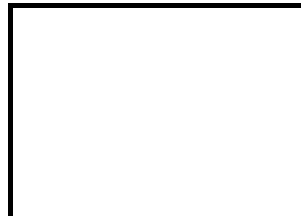
#19321 Hinge Cover
Covers 35mm extra hinge holes
Multiple colors



#1924 Castle Cap
Textured finish
Multiple colors



#1923 Castle Cap
Smooth finish
Multiple colors



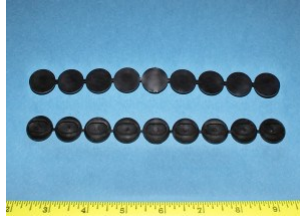
#3023 Dual Plug
2 8mm at 32mm part
Multiple colors



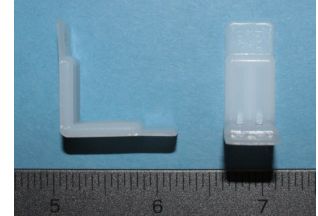


Glides and Guides

#298 Drawer Glide
Staple on twist off
3/4" OD X 3/16" thick



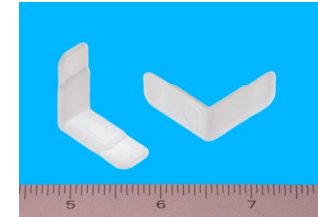
#218 Drawer Glide
5/8" X 5/8" X 1/2" X
1/8" Thick With 5/16" Staple Tabs



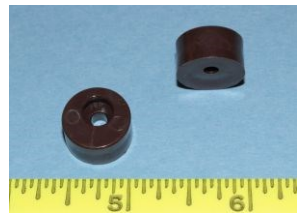
#1909 Eccentric Guide
9/16" tall X 9/16" OD
Attach with screw
Multiple colors



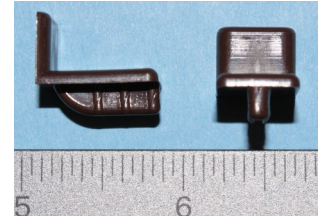
#200 Drawer Glide
5/8 X 5/8 long
1/2 Wide
080 Thick



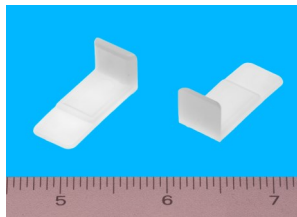
#1957 Eccentric Guide
1/4" tall X 9/16" OD
Attach with screw
Multiple colors



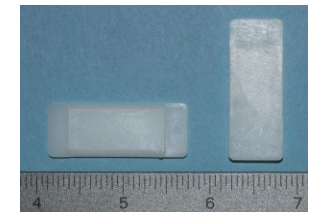
#201 Drawer Glide
3/8 x 5/8 long
1/2 wide
080 Thick



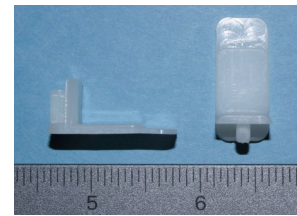
#206 Drawer Glide
3/8 X 5/8 X 080
1/2 wide
5/16 staple tab



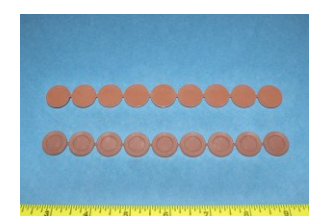
#230 Drawer Glide
1/8" X 1-5/8"
Staple tabs on each end



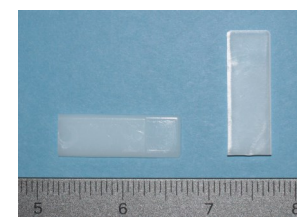
#216 Drawer Glide
5/8" X 1/2" X .060"
fits .080 saw slot



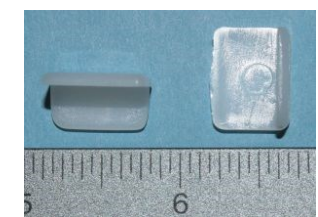
#299 Drawer Glide
Staple on twist off
11/16" OD
1/8" thick



#217 Drawer Glide
3/8" X 1/2" X .063"
Staple in place



#225 Drawer Glide
080" thick with staple tab





Bainbridge Manufacturing, Inc.

Plastic Hardware Specialists | *Cabinet Master® Plastic Hardware*

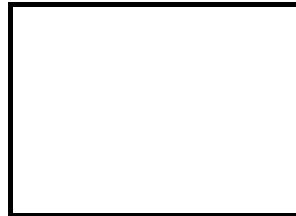
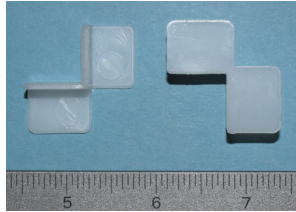
PO Box 487, 237 W. 3rd Street Waterville, WA 98858

1-509-745-9555 | info@bainbridgemfg.com

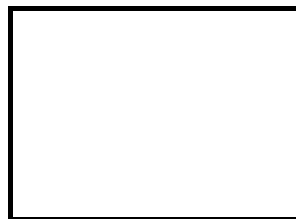
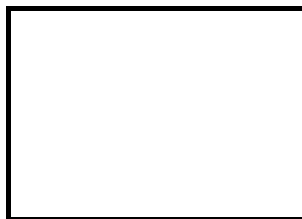
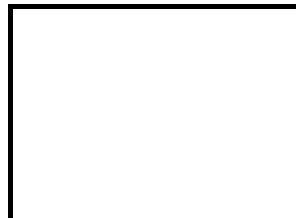
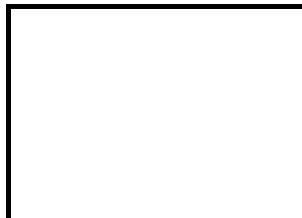
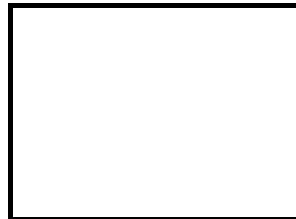
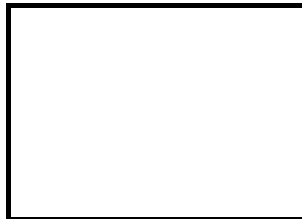
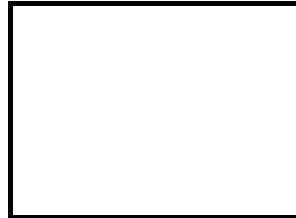
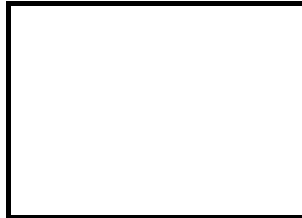
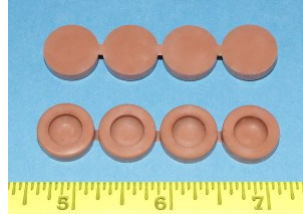
www.bainbridgemfg.com

Glides and Guides

#205 Drawer Glide
Reversible
078 Thick



#295 Drawer Glide
Staple on twist off 5/8"
OD
3/16" thick





Bainbridge Manufacturing, Inc.

Plastic Hardware Specialists | Cabinet Master® Plastic Hardware

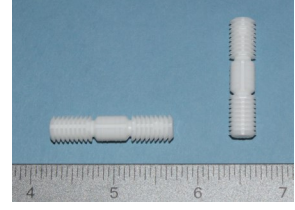
PO Box 487, 237 W. 3rd Street Waterville, WA 98858
1-509-745-9555 | info@bainbridgemfg.com
www.bainbridgemfg.com

Miscellaneous

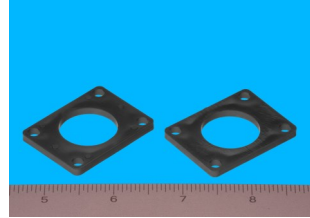
#1979 Dowel pin
8mm diameter
ABS
1-1/2" long



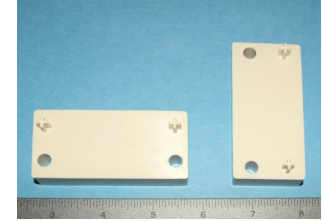
#1996 Dowel Pin
SUPER GRIP
8mm diameter
Nylon
1-1/2" long



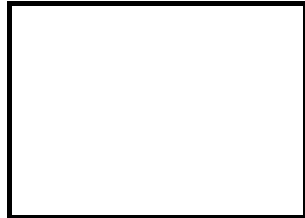
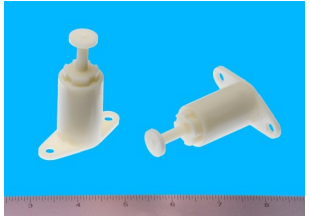
#3517 Lock Spacer
1/8" Thick



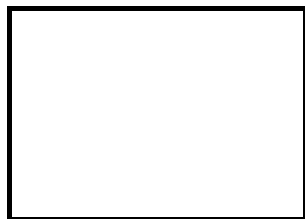
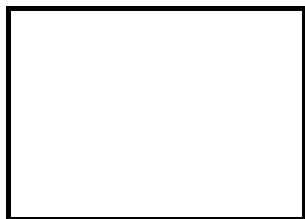
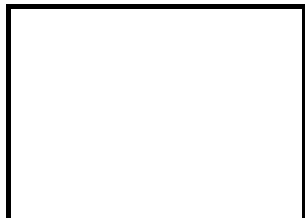
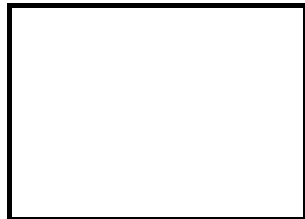
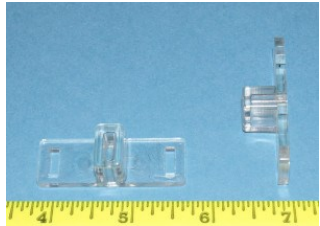
#37001 Adapter
1/2" build up adapter
for Bainbridge
Undermount spacers
Multiple colors



#1021 Flexa Touch
Automatic drawer
opener pops open and
closed like a ball point
pen



#1915
Door Stop
Uses 2 screws





Bainbridge Manufacturing, Inc.

COPY & FAX ORDER FORM

FAX: 1-509-745-9666

Bainbridge Manufacturing, Inc.
P.O. Box 487
237 W. 3rd St.
Waterville, WA 98858
(509) 745-9555 sales@Bainbridgemfg.com

Date: _____

Customer PO# _____ Customer #: _____

Phone: _____ Fax: _____ Email: _____

Purchaser's Name: _____ Company Name: _____

Ship Date: _____ Freight Carrier: _____

Shipping: UPS GROUND 2ND DAY 3RD DAY NEXT DAY AIR

Bill To Address:

Ship To Address:

PAYMENT METHOD: VISA MC AM EXPRESS CHECK COD

CREDIT CARD # _____ EXP DATE: _____

NAME ON CARD: _____ CCV CODE: _____

Part #	Description	Color	Qty	Price

www.BainbridgeMfg.com
For FREE Samples Call 800-255-4702

